



UNIVERSITY OF CALIFORNIA  
POLICE DEPARTMENT

2007  
Annual Report & Crime Statistics

## Introduction

### Universitywide

University Highlights

Crime Statistics

Ratio of Police Officers  
to Campus Population

# Universitywide



PDF Version

Berkeley

Davis

Irvine

Los Angeles

Merced

Riverside

San Diego

San Francisco

Santa Barbara

Santa Cruz

Glossary

## Universitywide Crime Summary

### FBI Crime Index Offenses

The University of California's FBI Part I Crime Offenses decreased by 5.4% in 2007. Violent crime increased by 12.6%, while property crime decreased by 7%. Property crime offenses represented 90.53% of the 5,679 cases using the FBI reporting criteria contained in the Uniform Crime Reporting (UCR) Program to determine the University of California's 2007 reportable crimes.

Valid assessments are possible only with careful study and analysis of the range of unique conditions affecting each local law enforcement jurisdiction. ***The reader is, therefore, cautioned against comparing statistical data of individual reporting units from cities, metropolitan areas or universities solely on the basis of their population coverage or student enrollment.***

### Violent Crime

#### Summary

There were 538 reports of violent crimes in 2007, compared to 478 in 2006.

- No homicides - the same as 2006

- Nineteen rapes - four less than 2006
- One attempted rape - one less than 2006
- Fifty four robberies - seven less than 2006
- Four hundred sixty five assaults - seventy one more than 2006
  - Of the assaults reported in 2007, 398 were simple assaults compared to 341 in 2006

## Property Crime

### Summary

There were 5,141 property crimes reported in 2007, a decrease of 384 compared to 2006.

- Burglary - decreased 8.9%
- Larceny theft - decreased 6.4%
- Motor vehicle theft - decreased 19.9%
- Arson - increased from 15 in 2006 to 35 in 2007

## Other Offenses

### Summary

The University of California Police Department is reporting other offenses based upon defined criteria derived from the FBI Part II definitions. Based on the different criteria for identifying and collecting the data, some of the headings for “Other Offenses” in the versions of the Annual Report prior to 2006 do not lend themselves to comparison with data collected in this edition of the Annual Report.

### Forgery & Counterfeiting

The number of Systemwide reported instances of Forgery & Counterfeiting cases was 71 in 2007 while the University reported 103 cases in 2006.

### Fraud

The number of 2007 Systemwide reported cases for Fraud was 218.

In 2006 the University reported 134 cases. Some of this increase can be attributed to the growth of reports of identity theft.

### Embezzlement

The number of reported embezzlement cases in 2007 was 16. In 2006, there were 15 reports.

### Stolen Property, Receiving, Possessing

The number of reported offenses related for buying, receiving and/or possessing stolen property in 2007 was 41. In 2006, this category had 452 cases.

### Vandalism

In 2007, the number of vandalism cases was 1,138 compared to 956 in 2006.

### Weapons Offenses

Weapons Offenses – Firearms: In 2007, the number of reported firearms offenses was 13 compared to 12 in 2006. This represents a decrease of 16.7%.

Weapons Offenses – All Others: In 2007, the number of weapons offenses – all other, was 58 compared to 61 in 2006. This represents a decrease of 4.9%.

Overall, Weapons offenses decreased 2.7% from 73 in 2006 to 71 in 2007.

### Sex Offenses

The number of reported Sex Offenses in 2007 was 56 compared to 56 in 2006.

### Drug Abuse Violations

In 2007, there were 607 drug abuse violations. In 2006, there were 596 violations reported. Drug paraphernalia offenses are measured in “All Other Offenses - All Other UCR 26.”

### Gambling

In 2007 as well as 2006, there were no gambling offenses reported.

## DUI (Alcohol & Drugs)

In 2007, there were 323 reported DUI cases compared to 323 in 2006. This no change in reported offenses.

## Liquor Laws

The number of liquor law violations reported in 2007 was 503. In 2006, there were 289 offenses reported. This represents a 74% increase in reported offenses.

## Drunkness

The number of drunkenness offenses in 2007 was 741. In 2006, the University reported 730 Drunkenness cases. This represents a 1.5% increase.

## Disorderly Conduct

In 2007, there were 158 disorderly conduct cases. In 2006, the University reported 96 incidents. This data include other offenses surrounding breaches of the peace.

## All Other UCR

Overall, in 2007 there were 1517 All Other UCR Offenses reported. Within this category, the following five categories were identified in order to highlight offenses reported within All Other Offenses.

**All Other Offenses - Bomb Actual:** The number of reported actual bomb offenses remained the same with from 1 reported in 2006 and 1 reported in 2007.

**All Other Offenses - Bomb Threat:** The number of reported bomb threats increased from 5 reported in 2006 to 7 reported in 2007.

**All Other Offenses - Trespass Demo:** Incidents of trespassing related to campus demonstrations and protests increased from 3 in 2006 to 15 reported in 2007.

**All Other Offenses - Trespass Other:** Other types of trespassing displayed a 15.5% decrease from 116 in 2006 to 98 in 2007.

## Clearance Rates

The clearance rate for FBI Part I Offenses in 2007 increased to 13.6%.

- 63.8% of reported violent crimes were cleared in 2007.
- 8.3% of property offenses were cleared in 2007.

The clearance rate for Part II Offenses was 68.4% in 2007.

## Arrests

University of California Police Officers arrested 4,486 persons in 2007. Of those arrested, 77.8% were not affiliated with the University. Of those total persons arrested in 2007, 148 persons were arrested for Part I violent offenses, 315 for Part I property crimes, 2775 for Part II offenses and 1,248 persons were arrested for warrants or non-Part I/II crimes.

## Stolen & Recovered Property

Property reported stolen to the University of California Police in 2007 totaled \$4,591,371. Of the loss, \$1,192,043 was the property of the University of California. Total property recovered was valued at \$894,337 for an 19.5% recovery rate.

[TOP](#)

[Main](#)



[Page](#)



UNIVERSITY OF CALIFORNIA  
POLICE DEPARTMENT

2007

Annual Report & Crime Statistics

[Introduction](#)

[Universitywide](#)

[Universitywide](#)

[University Highlights](#)

[Crime Statistics](#)

[Ratio of Police Officers  
to Campus Population](#)

# Universitywide



[PDF Version](#)

[Berkeley](#)

[Davis](#)

[Irvine](#)

[Los Angeles](#)

[Merced](#)

[Riverside](#)

[San Diego](#)

[San Francisco](#)

[Santa Barbara](#)

[Santa Cruz](#)

[Glossary](#)

## Crime Statistics

- ***FBI Part I & Part II Crime Offenses***
- ***Arrests***
- ***Miscellaneous Activity***
- ***Value of Stolen Property***
- ***Crime Pie Charts***
- ***Crime Line Charts***
- ***Crime Rate Charts***

[Main](#)



[Page](#)

# Universitywide FBI Part I & Part II Crime Offenses 2005 to 2007

2007 PART I OFFENSES	2005 NUMBER OF ACTUAL OFFENSES	2006 NUMBER OF ACTUAL OFFENSES	2007 NUMBER OF ACTUAL OFFENSES	2006 to 2007 Percent Change	2007 Offenses Cleared by Arrest or Exceptional Means	2007 Percent Cleared
<b>Criminal Homicide</b>						
Murder & Non Negligent	0	0	0	**	0	N/A
Manslaughter by Negligence	0	0	0	**	0	N/A
<b>TOTAL CRIMINAL HOMICIDE</b>	<b>0</b>	<b>0</b>	<b>0</b>	<b>0%</b>	<b>0</b>	<b>N/A</b>
<b>Forcible Rape</b>						
Rape by Force	21	21	18	-14.3%	14	77.8%
Attempts to Commit Forcible Rape	4	2	1	**	1	100%
<b>TOTAL FORCIBLE RAPE</b>	<b>25</b>	<b>23</b>	<b>19</b>	<b>-17.4%</b>	<b>15</b>	<b>78.9%</b>
<b>Robbery</b>						
Firearm	14	9	10	11.1%	2	20%
Knife or Cutting Instrument	2	5	5	**	2	40%
Other Dangerous Weapon	3	2	8	**	3	37.5%
Strong - Arm	23	45	31	-31.1%	14	45.2%
<b>TOTAL ROBBERY</b>	<b>42</b>	<b>61</b>	<b>54</b>	<b>-11.5%</b>	<b>21</b>	<b>38.9%</b>
<b>Assault</b>						
Firearm	1	1	1	**	0	0%
Knife or Cutting Instrument	7	5	4	**	1	25%
Other Dangerous Weapon	20	17	20	17.6%	12	60%
Hands, Fists, Feet, etc.	84	30	42	40%	32	76.2%
Other Assault - Simple	287	341	398	16.7%	262	65.8%
<b>TOTAL ASSAULT</b>	<b>399</b>	<b>394</b>	<b>465</b>	<b>18%</b>	<b>307</b>	<b>66%</b>
<b>Part I Violent Crime Total</b>	<b>466</b>	<b>478</b>	<b>538</b>	<b>12.6%</b>	<b>343</b>	<b>63.8%</b>
<b>Burglary</b>						
Forcible Entry	214	188	179	-4.8%	12	6.7%
Unlawful Entry - No Force	486	514	454	-11.8%	76	16.7%

Attempted Forcible Entry	51	47	50	6.4%	4	8%
<b>TOTAL BURGLARY</b>	<b>751</b>	<b>750</b>	<b>683</b>	<b>-8.9%</b>	<b>92</b>	<b>13.5%</b>
<b>Larceny - Theft</b>						
<b>TOTAL LARCENY - THEFT</b>	<b>4655</b>	<b>4534</b>	<b>4242</b>	<b>-6.4%</b>	<b>310</b>	<b>7.3%</b>
<b>Motor Vehicle Theft</b>						
Autos	166	147	105	-28.6%	12	11.4%
Trucks and Buses	29	24	25	4.2%	0	0%
Other Vehicles	53	55	51	-7.3%	9	17.6%
<b>TOTAL MOTOR VEHICLE THEFT</b>	<b>248</b>	<b>226</b>	<b>181</b>	<b>-19.9%</b>	<b>21</b>	<b>11.6%</b>
<b>Arson</b>						
<b>TOTAL ARSON</b>	<b>10</b>	<b>15</b>	<b>35</b>	<b>133.3%</b>	<b>6</b>	<b>17.1%</b>
<b>Part I Property Crime Total</b>	<b>5664</b>	<b>5525</b>	<b>5141</b>	<b>-7%</b>	<b>429</b>	<b>8.3%</b>
<b>PART I OFFENSES TOTAL</b>	<b>6130</b>	<b>6003</b>	<b>5679</b>	<b>-5.4%</b>	<b>772</b>	<b>13.6%</b>

<b>2007 PART II OFFENSES</b>	<b>2005 NUMBER OF ACTUAL OFFENSES</b>	<b>2006 NUMBER OF ACTUAL OFFENSES</b>	<b>2007 NUMBER OF ACTUAL OFFENSES</b>	<b>2006 to 2007 Percent Change</b>	<b>2007 Offenses Cleared by Arrest or Exceptional Means</b>	<b>2007 Percent Cleared</b>
Forgery & Counterfeiting	96	103	72	-30.1%	24	33.3%
Fraud	49	134	218	62.7%	17	7.8%
Embezzlement	9	15	16	6.7%	10	62.5%
Stolen Property: Buy, Receive, Possess	511	42	41	-2.4%	30	73.2%
Vandalism	817	956	1138	19.0%	42	3.7%
Weapons Offenses - Firearms	15	12	13	8.3%	12	92.3%
Weapons Offenses - All Others	68	61	58	-4.9%	41	70.7%
<b>WEAPONS OFFENSES TOTAL</b>	<b>83</b>	<b>73</b>	<b>71</b>	<b>-2.7%</b>	<b>53</b>	<b>74.6%</b>
Sex Offenses	52	56	56	0%	14	25%
Drug Abuse Violations	505	596	607	1.8%	602	99.2%
Gambling	0	0	0	**	0	N/A
DUI (Alcohol & Drugs)	274	323	323	0%	321	99.4%
Liquor Laws	158	289	503	74%	544	108.2%
Drunkenness	537	730	741	1.5%	723	97.6%
Disorderly Conduct	58	96	158	64.6%	113	71.5%

All Other Offenses - Bomb Actual	1	1	0	**	0	N/A
All Other Offenses - Bomb Threat	8	5	8	**	1	12.5%
All Other Offenses - Trespass Demo	1	3	15	400%	14	93.3%
All Other Offenses - Trespass Other	212	116	98	-15.5%	68	69.4%
All Other Offenses - All Other UCR 26	710	730	1396	91.2%	504	36.1%
<b>ALL OTHER OFFENSES TOTAL</b>	<b>932</b>	<b>855</b>	<b>1517</b>	<b>77.4%</b>	<b>587</b>	<b>38.7%</b>
<b>PART II OFFENSES TOTAL</b>	<b>4081</b>	<b>4268</b>	<b>5461</b>	<b>28%</b>	<b>3080</b>	<b>56.4%</b>

\*\* Base numbers less than 10.

[TOP](#)

# Universitywide Arrests 2007

## 2007 Arrests - FBI Crime Offenses

PART I	Sex		Age		UC Affiliation				Total Arrests
	Male	Female	Adult	Juvenile	Student	Faculty/ Staff	Total Affiliates	Not Affiliated	
Homicide / Manslaughter	0	0	0	0	0	0	0	0	0
Rape	3	0	3	0	2	0	2	1	3
Robbery	26	4	16	14	3	0	3	27	30
Total Assault	102	13	115	0	36	5	41	74	115
<b>Total Violent Crime Arrests</b>	<b>131</b>	<b>17</b>	<b>134</b>	<b>14</b>	<b>41</b>	<b>5</b>	<b>46</b>	<b>102</b>	<b>148</b>
<b>Property Crime</b>									
Burglary	73	16	81	8	16	5	21	68	89
Larceny	149	44	177	16	84	14	98	95	193
Motor Vehicle Theft	24	2	25	1	6	1	7	19	26
Arson	7	0	7	0	5	0	5	2	7
<b>Total Property Arrests</b>	<b>253</b>	<b>62</b>	<b>290</b>	<b>25</b>	<b>111</b>	<b>20</b>	<b>131</b>	<b>184</b>	<b>315</b>
<b>TOTAL PART I ARRESTS</b>	<b>384</b>	<b>79</b>	<b>424</b>	<b>39</b>	<b>152</b>	<b>25</b>	<b>177</b>	<b>286</b>	<b>463</b>

PART II	Sex		Age		UC Affiliation				Total Arrests
	Male	Female	Adult	Juvenile	Student	Faculty/ Staff	Total Affiliates	Not Affiliated	
Forgery & Counterfeiting	13	6	18	1	11	1	12	7	19
Fraud	13	6	17	2	7	1	8	11	19
Embezzlement	2	2	4	0	1	1	2	2	4
Stolen Property: Buy, Receive, Possess	30	4	32	2	9	0	9	25	34
Vandalism	32	4	29	7	8	2	10	26	36
Weapons Offenses - Firearms	13	1	14	0	3	0	3	11	14
Weapons Offenses - All Others	33	1	31	3	4	0	4	30	34
Sex Offenses	10	2	12	0	1	0	1	11	12
Drug Abuse Violations	512	70	539	43	120	4	124	458	582
Gambling	0	0	0	0	0	0	0	0	0
DUI (Alcohol & Drugs)	275	49	314	10	62	6	68	256	324
Liquor Laws	455	136	569	22	137	0	137	454	591
Drunkenness	373	107	475	5	177	9	186	294	480
Disorderly Conduct	124	18	140	2	63	3	66	75	142
All Other Offenses - Bomb Actual	0	0	0	0	0	0	0	0	0
All Other Offenses - Bomb Threat	0	0	0	0	0	0	0	0	0
All Other Offenses - Trespass Demo	30	29	59	0	42	0	42	17	59
All Other Offenses - Trespass Other	70	9	76	3	12	1	13	66	79
All Other UCR 26	283	63	336	10	51	2	53	293	346
<b>TOTAL PART II ARRESTS</b>	<b>2268</b>	<b>507</b>	<b>2665</b>	<b>110</b>	<b>708</b>	<b>30</b>	<b>738</b>	<b>2037</b>	<b>2775</b>

### Warrants & Non-Part I / Part II Arrests

Warrants Served Felony	5	0	5	0	0	0	0	5	5
------------------------	---	---	---	---	---	---	---	---	---

# Universitywide Arrests 2007

## 2007 Arrests - FBI Crime Offenses

### Warrants & Non-Part I / Part II Arrests

Warrants Served Misdemeanor	93	19	112	0	13	2	15	97	<b>112</b>
Outside Warrants Served Felony	89	18	104	3	1	0	1	106	<b>107</b>
Outside Warrants Served Misdemeanor	336	60	390	6	9	0	9	387	<b>396</b>
All Other Non Part I/Part II Arrests	459	169	621	7	30	25	55	573	<b>628</b>
<b>TOTAL OTHER ARRESTS</b>	<b>982</b>	<b>266</b>	<b>1232</b>	<b>16</b>	<b>53</b>	<b>27</b>	<b>80</b>	<b>1168</b>	<b>1248</b>

<b>TOTAL ARRESTS</b>	<b>3634</b>	<b>852</b>	<b>4321</b>	<b>165</b>	<b>913</b>	<b>82</b>	<b>995</b>	<b>3491</b>	<b>4486</b>
----------------------	-------------	------------	-------------	------------	------------	-----------	------------	-------------	-------------

[TOP](#)

# Universitywide Miscellaneous Activity 2007

Police Officers Assaulted	
With Personal Injury	24
Without Personal Injury	28
<b>Total Officers Assaulted</b>	<b>52</b>
Bias Motivated Cases	
Race	9
Religion	8
Sexual Orientation	8
Ethnicity	5
Physical / Mental Disabled	0
<b>Total Bias Motivated Cases</b>	<b>30</b>
Weapons Related Cases	
Firearms	23
Knife / Blade	54
Other Dangerous Weapons	118
<b>Total Weapons Related Cases</b>	<b>195</b>
Domestic Violence Cases	
No Weapons Involved	62
Weapons Involved	10
<b>Total Domestic Violence Cases</b>	<b>72</b>
Alcohol-Related Cases	
Violent Crime	34
Property Crime	10

Other Offense	1685
<b>Total Alcohol-Related Cases</b>	<b>1729</b>
<b>Non-Criminal Reports</b>	
Suicide	6
Attempted Suicide	21
Mentally Disordered Persons	245
Vehicle Tows	945
Report for Outside Agency	527
All Other	4658
<b>Total Non-Criminal Reports</b>	<b>6402</b>
<b>Traffic Accidents</b>	
Fatal	1
Injury	120
Non-injury	731
Bicycle Involved (not included in total)	81
<b>Total Traffic Accidents</b>	<b>852</b>
<b>Alarms</b>	
Security Alarms	9753
Fire Alarms	3018
<b>Total Alarms</b>	<b>12,771</b>

[TOP](#)

# University of California Police Officers 2007

(per 1000 of population)

Campus	Students	Staff & Faculty	Total Population	Police Officers	Off Campus Assignments**	Ratio
<b>Berkeley</b>	33,933	17,021	<b>50,954*</b>	77	9	<b>1.33</b>
<b>Davis</b>	30,475	20,295	<b>50,770</b>	50	0	<b>0.98</b>
<b>Irvine</b>	25,871	12,186	<b>38,057</b>	32	1.5	<b>0.80</b>
<b>Los Angeles</b>	38,218	27,489	<b>65,707</b>	59	3	<b>0.85</b>
<b>Merced</b>	1286	619	<b>1905</b>	8	0	<b>4.20</b>
<b>Riverside</b>	16,875	4482	<b>21,357</b>	28	5	<b>1.08</b>
<b>San Diego</b>	26,868	17,591	<b>44,459</b>	36	0	<b>0.81</b>
<b>San Francisco</b>	4326	17,383	<b>21,709</b>	44	0	<b>2.03</b>
<b>Santa Barbara</b>	21,082	5987	<b>27,069</b>	33	7	<b>0.96</b>
<b>Santa Cruz</b>	15,364	4537	<b>19,901</b>	19	1	<b>0.90</b>
<b>TOTAL</b>	<b>214,298</b>	<b>127,590</b>	<b>341,888</b>	<b>386</b>	<b>26.5</b>	<b>1.05</b>

Population data obtained from University of California, Office of the President.

<http://www.universityofcalifornia.edu/finreports/index.php?file=/06-07/pdf/campusfacts2007.pdf>

\*Berkeley population includes Lawrence Berkeley National Laboratory population.

\*\*The following campuses have personnel assigned off campus. These officers are not calculated into the officer to population ratio:

**Berkeley** - Four officers are assigned to patrol with the Berkeley Police Department, and 1 officer is assigned to the Alameda County Joint Task Force and 4 officers assigned to the South Side Project.

**Irvine** - 1.5 officers are assigned to the medical center in the City of Orange.

**Los Angeles** - One officer is assigned to University South Apartments off-campus housing, 1 officer is assigned to the Santa Monica-UCLA Medical Center and Orthopaedic Hospital and 1 officer is assigned to the off campus North Westwood Village (residential neighborhood and fraternities).

**Riverside** - Five Officers are assigned off campus to the University Neighborhood Enhancement Team (UNET) with the Riverside Police Department.

**Santa Barbara** - Seven officers are assigned off campus to the Isla Vista Foot Patrol.

**Santa Cruz** - One officer is assigned off campus to Mt. Hamilton.

[TOP](#)

Main  
  
2007  
Page

# Universitywide

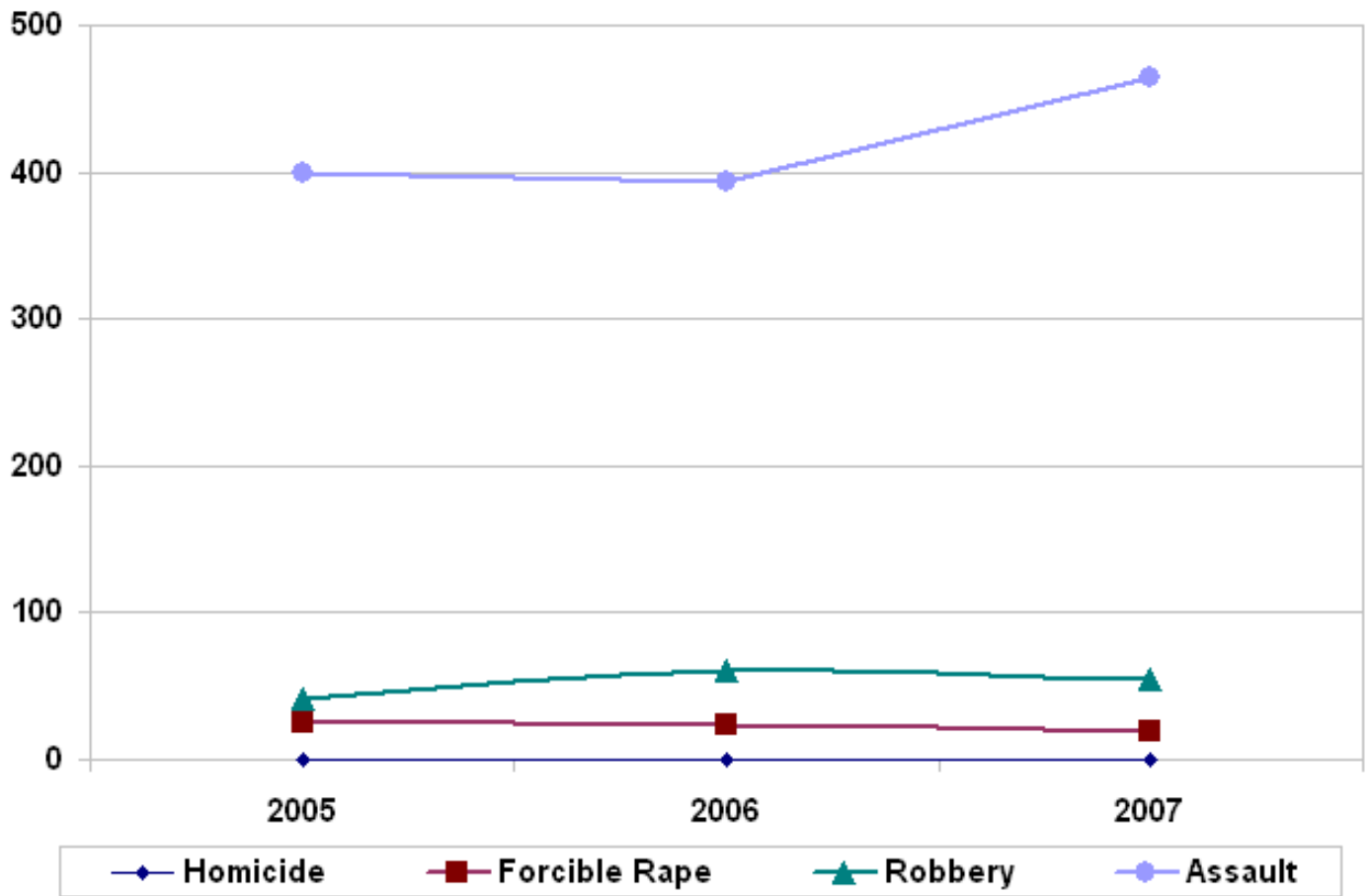
## Value of Stolen and Recovered Property 2007

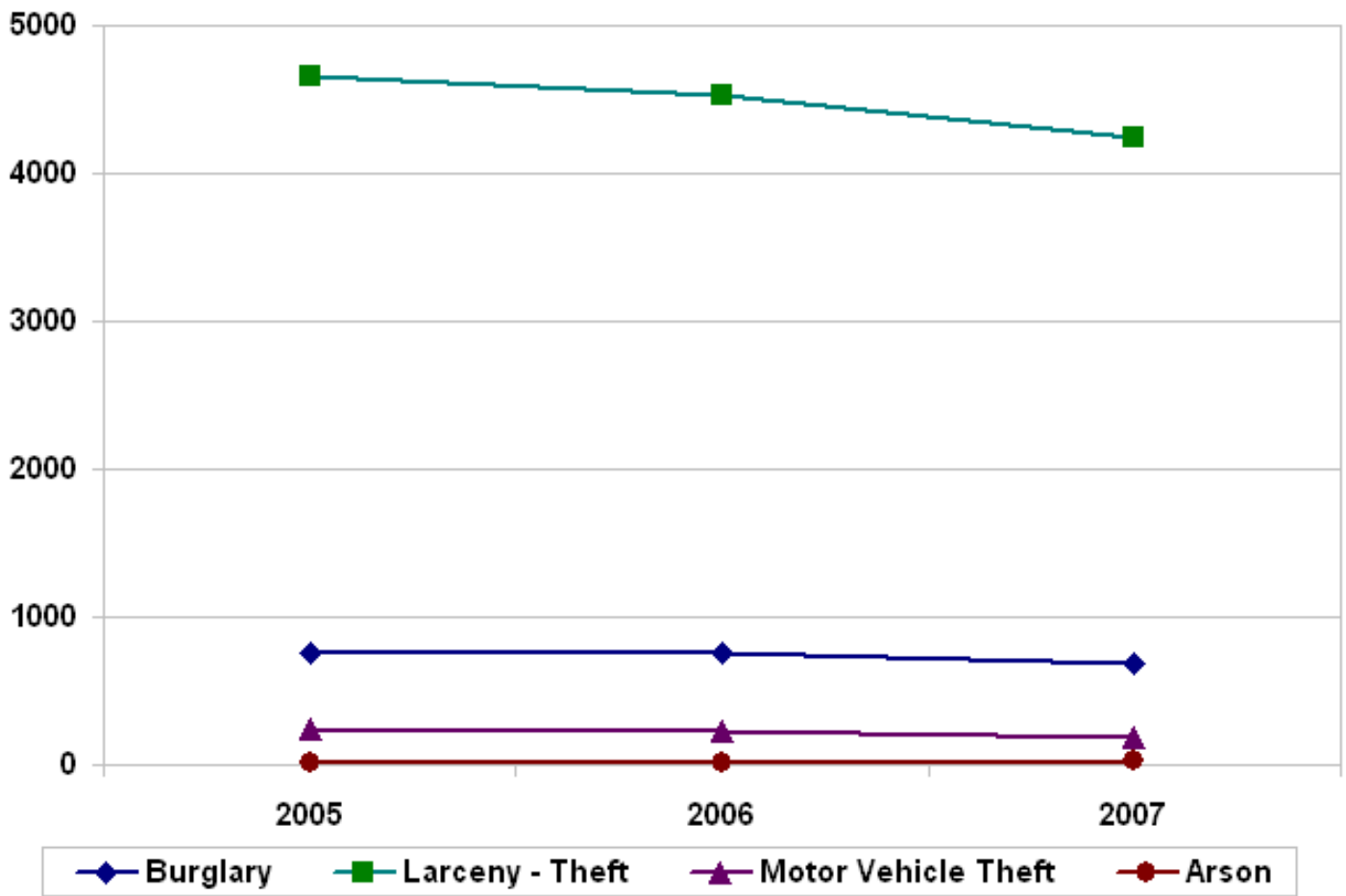
Type of Property	Stolen Property			Recovered Property			Percent Recovered
	University Property	Other Property	Total Stolen	University Property	Other Property	Total Recovered	
Currency, Notes, etc.	\$38,326	\$119,174	\$157,500	\$70	\$948	\$1018	0.6%
Jewelry & Precious Metals	\$78,098	\$165,838	\$243,936	\$75,100	\$18,040	\$93,140	38.2%
Clothing & Furs	\$4232	\$85,790	\$90,022	\$1008	\$5050	\$6058	6.7%
Locally Stolen Motor Vehicles	\$82,494	\$1,011,488	\$1,093,982	\$52,492	\$467,811	\$520,303	47.6%
Office Equipment - Computer	\$372,748	\$603,512	\$976,260	\$13,508	\$48,547	\$62,055	6.4%
Office Equipment - Other	\$118,577	\$73,932	\$192,509	\$325	\$2643	\$2968	1.5%
TVs, Radios, Stereos, etc.	\$85,307	\$231,098	\$316,405	\$9498	\$9858	\$19,356	6.1%
Firearms	\$100	\$480	\$580	\$100	\$0	\$100	17.2%
Household Goods	\$7891	\$7850	\$15,741	\$481	\$75	\$556	3.5%
Consumable Goods	\$5435	\$5291	\$10,726	\$1567	\$87	\$1654	15.4%
Livestock	\$0	\$115	\$115	\$0	\$0	\$0	0%
Miscellaneous - Bicycles	\$1501	\$335,734	\$337,235	\$401	\$17,772	\$18,173	5.4%
Miscellaneous - Other	\$397,334	\$759,026	\$1,156,360	\$41,171	\$127,785	\$168,956	14.6%
<b>TOTAL</b>	<b>\$1,192,043</b>	<b>\$3,399,328</b>	<b>\$4,591,371</b>	<b>\$195,721</b>	<b>\$698,616</b>	<b>\$894,337</b>	<b>19.5%</b>

[TOP](#)

# Universitywide Crime Graphs

## Violent Crime - 2003 to 2007

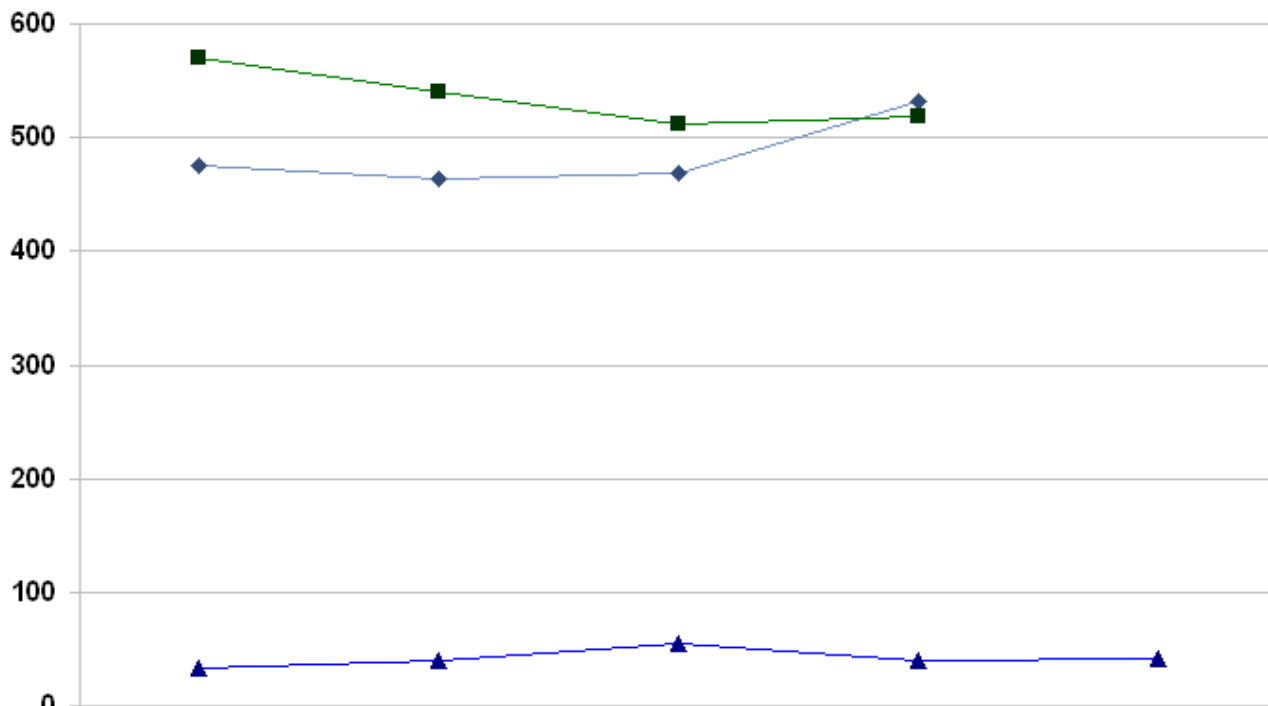




[TOP](#)

# Universitywide Crime Rate Charts

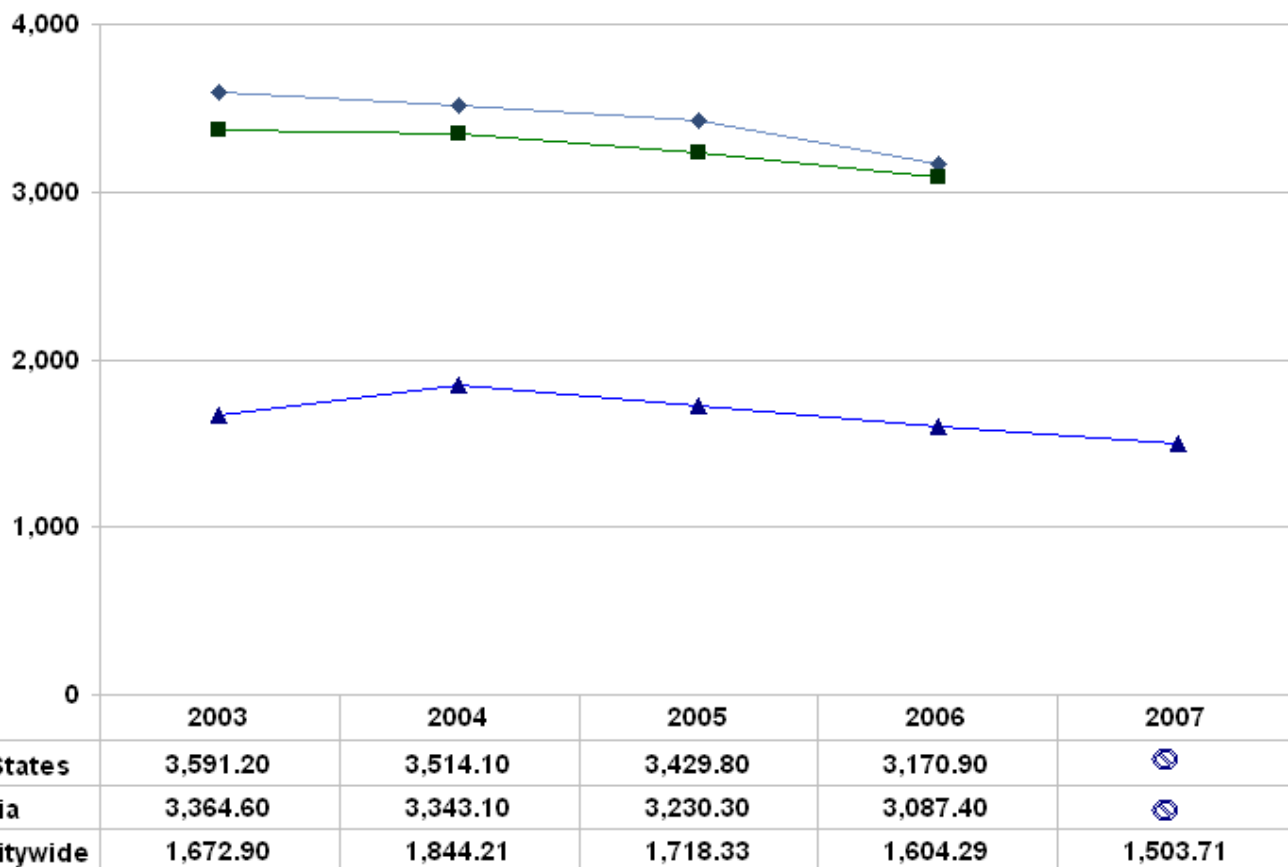
Violent Crime 2003 to 2007



	2003	2004	2005	2006	2007
◆ United States	475.80	463.20	469.20	532.50	⊗
■ California	569.40	539.60	512.30	518.40	⊗
▲ Universitywide	33.61	40.07	54.30	39.89	40.95

# Universitywide Crime Rate Charts

Property Crime 2003 to 2007



Rate per 100,000 population - Universitywide population 341,888

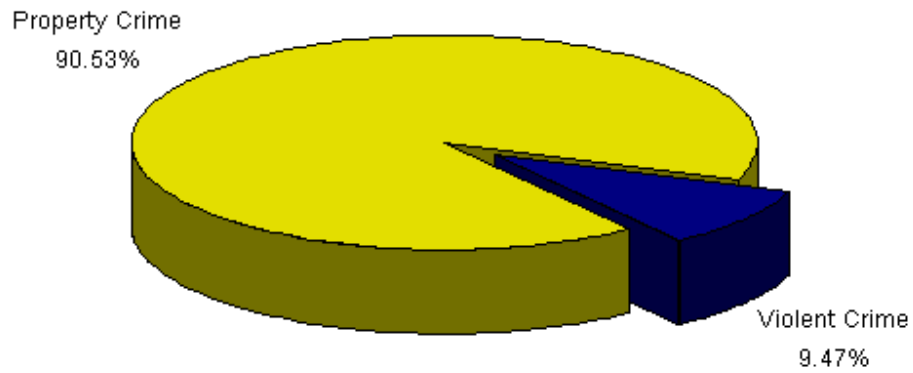
⊗ Data not available at time of publication.

\*\* See "[In This Report](#)" for a definition of Metropolitan Areas for the campuses. The Universitywide rates are compared to the State of California rates.

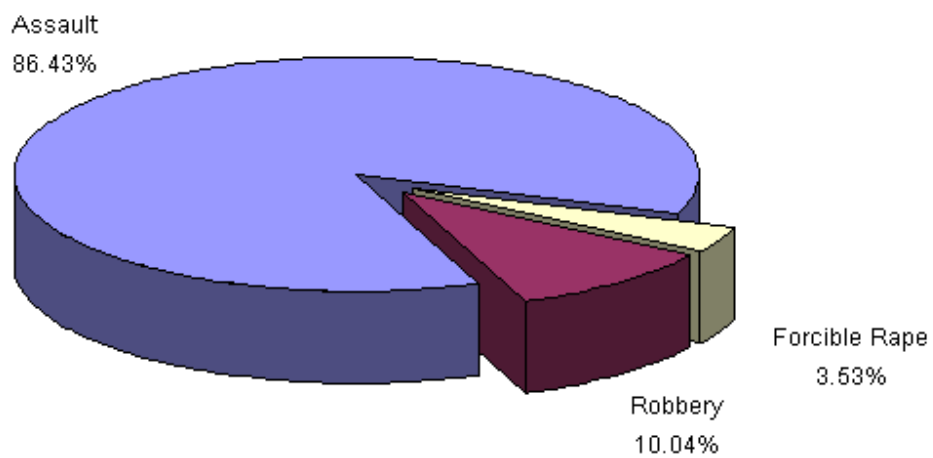
[TOP](#)

## Universitywide Crime Charts

### 2007 Crime By Category

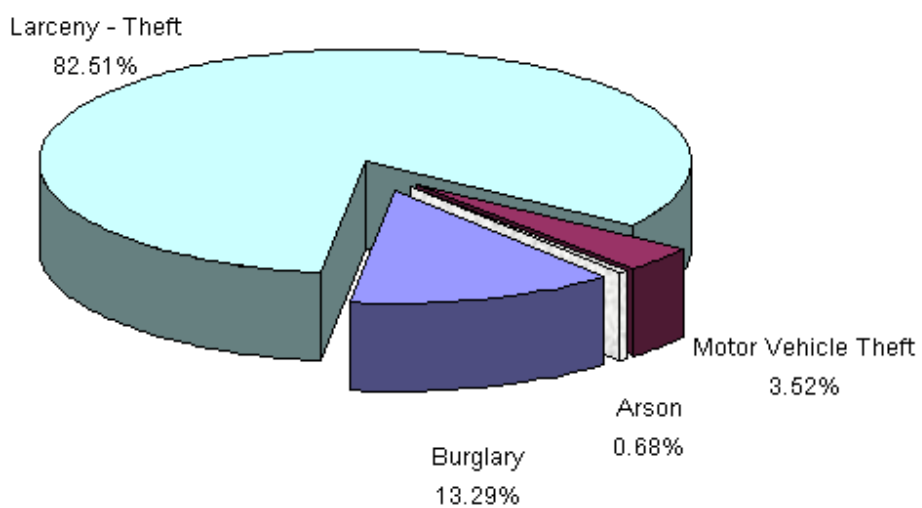


### Violent Crime - 2007



## Universitywide Crime Charts

Property Crime - 2007



[TOP](#)