



UNIVERSITY OF CALIFORNIA  
POLICE DEPARTMENT

## 2007 Annual Report & Crime Statistics

### Introduction

Universitywide

Berkeley

Davis

Irvine

Los Angeles

Program Highlights

Crime Statistics

Merced

Riverside

San Diego

San Francisco

Santa Barbara

Santa Cruz

Glossary

# Los Angeles

## Program Highlights

The University of California Police Department Los Angeles had another busy year providing law enforcement services to the campus, medical centers, nearby neighborhoods and properties located throughout the Los Angeles region. These properties include student housing complexes in the Palms/Westdale area of Los Angeles and hospitals and clinics in Santa Monica. UCPD serves an estimated daily campus population of over 70,000 people including over 9,500 students living in on-campus residence halls.

2007 saw a reduction in serious crimes from the previous year. For Part I (serious offenses) reported crimes were down approximately 8 percent. Robberies declined approximately 28%. Burglaries by forcible entry declined approximately 15 percent. One factor that led to the decrease was the arrest of individuals who were responsible for multiple crimes.

For the second year, officers repeated a program in the fall quarter using a “zero tolerance” approach to the public consumption of alcohol, hoping to discourage alcohol abuse in the local neighborhood adjacent to campus which houses a large number of students. For this year’s operation, UCPD gathered a number of partners and focused on outreach and education in addition to enforcement. UCPD participates in many campus efforts centered on substance abuse and we are currently chairing a subcommittee on harm reduction.

The main area of increased reports was for fraud which includes identity theft. This is a growing issue throughout law enforcement. Fortunately, there is a greater awareness by the public regarding the importance of reporting fraud. A number of programs occurring throughout the year to educate campus constituencies in this area have been successful in preventing additional crimes and educating individuals regarding the appropriate steps to take if they are victimized.

Our successful community policing philosophy emphasizes involvement. Our accomplishments are dependent on the relationships established by officers and staff. We are involved in a number of problem solving partnerships for example, with the Center for Women and Men, LGBT Resource Center, Student Government, Athletics, Residential Life, Fraternity and Sorority Relations, the Dean of Students office, local neighbors and adjacent law enforcement agencies.

Additional information regarding UCPD at UCLA can be found on our website, ***[www.ucpd.ucla.edu](http://www.ucpd.ucla.edu)***.

## Organization

Chief of Police Karl Ross oversees the entire department, which is divided into three bureaus responsible for planning, day-to-day operations/programs, coordination, community involvement and accountability. Assistant Chief of Police, Jeff Young assists the chief and provides oversight of the Operations Bureau, Support Operations Bureau and the business units for the department.

### Field Operations Bureau

The Field Operations Bureaus, under the command of a Captain, combines the traditional police services of uniformed patrol officers and investigative follow-up. The Operations Bureau includes the Patrol Division, the Investigations Division, Field Training Officer Program, Workplace Violence/Threat Assessment and the Special Events Unit.

In 2007, we responded to approximately 73, 900 thousand calls for service. Patrol officers are the first responders to our community's seven beats that include both on and off campus locations. In addition to marked patrol cars, we also utilize motorcycles, bicycles and foot patrols. Uniform personnel play a key role in our community oriented policing efforts with the good will engendered by the lead officer program a critical component. Lead officers are assigned to areas, such as the two medical centers, off campus housing, fraternities and adjacent neighborhoods, and residence halls. Field training officers have an important function in patrol assuring that new officers at UCLA receive appropriate training and have an understanding of the campus culture.

The workplace violence/threat assessment unit is an integral part of a campuswide, multi-disciplinary team that collaborates to provide resolutions for incidents of workplace violence, personnel actions and/or disciplinary actions. In 2007, 24 instances of workplace violence were brought to our attention. This is approximately 41% more then reported in 2006.

The Special Events Unit is responsible for coordinating, planning and implementing security services for a variety of events including concerts, intercollegiate, sporting events, debates, demonstrations, mutual aid, film shoots, cash escorts and VIP dignitary visits including visits by former First Lady Nancy Reagan, California Governor Arnold Schwarzenegger, Los Angeles Mayor Antonio Villaraigosa and New York Senator Hillary Clinton.

### Support Operations Bureau

The Support Operations Bureau, supervised by a Captain, is comprised of the following units: Community Service Officer Programs (CSO), Records Division, Communications Center, Property/Evidence Unit, Training and Personnel, and Alarms.

The CSO Programs are a primary outlet for student participation in campus safety at UCLA. CSOs provide evening escorts throughout the year and a campus shuttle service during academic quarters.

Currently, CSOs, stationed in and/or patrolling 9 campus buildings, all residence halls, all parking lots and all libraries, act as the "eyes and ears" of the UCPD.

2007 was an exciting year for the Communications Center. On December 17th, the Dispatchers officially vacated the Communications Center of our soon-to-be demolished Police Station, and began working out of a temporary location. Also continuing in 2007, in an effort to further assist the community, our Communications Center began receiving Phase I/II wireless E911 calls from additional carriers. Plans for a GIS mapping system are in development, with installation by early 2008.

The Records Division is responsible for maintaining records and reports, meeting legal mandates for statistical reporting and Livescan fingerprint operations.

The Personnel and Training Unit continues to work hard to ensure a high quality of police officer and public safety dispatcher applicants are recruited and processed. Additionally, the unit ensures that the department staff and officers receive quality training that provides specialized training for their positions and career development as well as training that meets POST requirements and legislative mandates. This unit co-sponsors an annual violent crime analysis seminar with the FBI.

### **Police Community Services Bureau**

This bureau, supervised by a Director, is a resource for the department and community. The bureau's responsibilities include: Crime Prevention Unit, Crime Analysis Unit, public information, external affairs and campus liaison, community education, portal operations, special projects, the Lead Officers, the Mentor Program and the UCPD emergency medical service ambulances (EMS).

Crime prevention efforts are designed to enhance public safety awareness and prevent crime through education, environmental design and outreach. In 2007, crime prevention presentations/activities directly reached approximately 9500 students, faculty

and staff. The Student Government established a new Student Safety Alliance committee, which includes representatives from UCPD. This group meets routinely to discuss campus safety, to provide a forum for student concerns and an opportunity for members to work on safety related issues together.

The Los Angeles area is an active media market often featuring news from UCLA. We are challenged to provide accurate and timely responses to complex issues. The UCPD web page is routinely updated and improved to provide information on UCPD and public safety to the community, which also includes the posting of crime briefs and safety alerts. The crime briefs notify the campus community about recent crime activity or trends in and/or around the campus. The safety alerts provide timely warnings about significant crimes impacting the campus. The safety listservs provide information to interested community members with one list dedicated to UCLA building coordinators.

A priority of the crime analysis program is to enhance the effectiveness and efficiency of the Police Department's crime suppression efforts, and provide the public with accurate information regarding crime at UCLA. Daily, weekly and monthly statistical analysis is provided to staff helping to direct crime-fighting activities and provide on-going crime prevention information to the campus community.

UCPD Emergency Medical Services (EMS) is a student-staffed program, employing UCLA students trained as emergency medical technicians (EMTs) to staff the campus ambulance. The program is currently in its 29th year of operation, serving the campus and surrounding areas. EMS responds to 9-1-1 medical aid calls 24 hours a day, 365 days a year, with an average response time of less than four minutes. In 2007, EMS calls increased by approximately 15% with staff handling 1404 medical aid calls, from which 1054 patients were transported to the UCLA Emergency Medicine Center with complaints ranging from sprained ankles to cardiac arrest. Aside from responding to medical emergencies, EMTs,

serving as station officers, wrote approximately 500 of the police reports at the department.

***TOP***

**Main**



**Page**



UNIVERSITY OF CALIFORNIA  
POLICE DEPARTMENT

2007

Annual Report & Crime Statistics

**Introduction**

Universitywide

Berkeley

Davis

Irvine

**Los Angeles**

Program Highlights

Crime Statistics

Merced

Riverside

San Diego

San Francisco

Santa Barbara

Santa Cruz

**Glossary**



## Crime Statistics

- ***FBI Part I & Part II Crime Offenses***
- ***Arrests***
- ***Miscellaneous Activity***
- ***Value of Stolen Property***
- ***Crime Pie Charts***
- ***Crime Line Charts***
- ***Crime Rate Charts***

[Main](#)



[Page](#)

# U.C. Los Angeles

## FBI Part I & Part II Crime Offenses

### 2005 to 2007

2007 PART I OFFENSES	2005 NUMBER OF ACTUAL OFFENSES	2006 NUMBER OF ACTUAL OFFENSES	2007 NUMBER OF ACTUAL OFFENSES	2006 to 2007 Percent Change	2007 Offenses Cleared by Arrest or Exceptional Means	2007 Percent Cleared
<b>Criminal Homicide</b>						
Murder & Non Negligent	0	0	0	**	0	N/A
Manslaughter by Negligence	0	0	0	**	0	N/A
<b>TOTAL CRIMINAL HOMICIDE</b>	<b>0</b>	<b>0</b>	<b>0</b>	<b>**</b>	<b>0</b>	<b>N/A</b>
<b>Forcible Rape</b>						
Rape by Force	8	3	5	**	4	80%
Attempts to Commit Forcible Rape	0	1	0	**	0	N/A
<b>TOTAL FORCIBLE RAPE</b>	<b>8</b>	<b>4</b>	<b>5</b>	<b>**</b>	<b>4</b>	<b>80%</b>
<b>Robbery</b>						
Firearm	4	3	1	**	0	0%
Knife or Cutting Instrument	1	2	2	**	0	0%
Other Dangerous Weapon	1	0	1	**	0	0%
Strong - Arm	7	13	9	-31%	5	56%
<b>TOTAL ROBBERY</b>	<b>13</b>	<b>18</b>	<b>13</b>	<b>-28%</b>	<b>5</b>	<b>38%</b>
<b>Assault</b>						
Firearm	1	0	1	**	0	0%
Knife or Cutting Instrument	2	2	2	**	1	50%
Other Dangerous Weapon	5	4	5	**	4	80%
Hands, Fists, Feet, etc.	63	12	13	8%	10	77%
Other Assault - Simple	10	50	74	48%	45	61%
<b>TOTAL ASSAULT</b>	<b>81</b>	<b>68</b>	<b>95</b>	<b>40%</b>	<b>60</b>	<b>63%</b>
<b>Part I Violent Crime Total</b>	<b>102</b>	<b>90</b>	<b>113</b>	<b>26%</b>	<b>69</b>	<b>61%</b>
<b>Burglary</b>						
Forcible Entry	72	47	40	-15%	4	10%
Unlawful Entry - No Force	202	153	175	14%	32	18%

Attempted Forcible Entry	25	9	11	22%	1	9%
<b>TOTAL BURGLARY</b>	<b>299</b>	<b>209</b>	<b>226</b>	<b>8%</b>	<b>37</b>	<b>16%</b>
<b>Larceny - Theft</b>						
<b>TOTAL LARCENY - THEFT</b>	<b>793</b>	<b>820</b>	<b>686</b>	<b>-16%</b>	<b>59</b>	<b>9%</b>
<b>Motor Vehicle Theft</b>						
Autos	26	26	22	-15%	2	9%
Trucks and Buses	6	1	5	**	0	0%
Other Vehicles	15	19	17	-11%	4	24%
<b>TOTAL MOTOR VEHICLE THEFT</b>	<b>47</b>	<b>46</b>	<b>44</b>	<b>-4%</b>	<b>6</b>	<b>14%</b>
<b>Arson</b>						
<b>TOTAL ARSON</b>	<b>1</b>	<b>0</b>	<b>1</b>	<b>**</b>	<b>0</b>	<b>0%</b>
<b>Part I Property Crime Total</b>	<b>1140</b>	<b>1075</b>	<b>957</b>	<b>-11%</b>	<b>102</b>	<b>11%</b>
<b>PART I OFFENSES TOTAL</b>	<b>1242</b>	<b>1165</b>	<b>1070</b>	<b>-8%</b>	<b>171</b>	<b>16%</b>

<b>2007 PART II OFFENSES</b>	<b>2005 NUMBER OF ACTUAL OFFENSES</b>	<b>2006 NUMBER OF ACTUAL OFFENSES</b>	<b>2007 NUMBER OF ACTUAL OFFENSES</b>	<b>2006 to 2007 Percent Change</b>	<b>2007 Offenses Cleared by Arrest or Exceptional Means</b>	<b>2007 Percent Cleared</b>
Forgery & Counterfeiting	44	56	17	-70%	2	12%
Fraud	1	50	149	198%	4	3%
Embezzlement	1	3	3	**	2	67%
Stolen Property: Buy, Receive, Possess	7	3	2	**	3	150%
Vandalism	138	159	130	-18%	6	5%
Weapons Offenses - Firearms	5	3	3	**	2	67%
Weapons Offenses - All Others	12	11	9	-18%	6	67%
<b>WEAPONS OFFENSES TOTAL</b>	<b>17</b>	<b>14</b>	<b>12</b>	<b>-14%</b>	<b>8</b>	<b>67%</b>
Sex Offenses	9	20	14	-30%	0	0%
Drug Abuse Violations	65	53	82	55%	91	111%
Gambling	0	0	0	**	0	N/A
DUI (Alcohol & Drugs)	54	49	42	-14%	42	100%
Liquor Laws	8	115	120	4%	149	124%
Drunkenness	15	13	5	-62%	5	100%
Disorderly Conduct	5	4	47	1075%	19	40%

All Other Offenses - Bomb Actual	0	0	0	**	0	N/A
All Other Offenses - Bomb Threat	4	1	2	**	0	0%
All Other Offenses - Trespass Demo	0	0	1	**	0	0%
All Other Offenses - Trespass Other	26	20	21	5%	8	38%
All Other Offenses - All Other UCR 26	4	60	62	3%	51	82%
<b>ALL OTHER OFFENSES TOTAL</b>	<b>34</b>	<b>81</b>	<b>86</b>	<b>6%</b>	<b>59</b>	<b>69%</b>
<b>PART II OFFENSES TOTAL</b>	<b>398</b>	<b>620</b>	<b>709</b>	<b>14%</b>	<b>390</b>	<b>55%</b>

\*\* Base numbers less than 10.

[TOP](#)

# U.C. Los Angeles Arrests 2007

## 2007 Arrests - FBI Crime Offenses

PART I	Sex		Age		UC Affiliation				Total Arrests
	Male	Female	Adult	Juvenile	Student	Faculty/ Staff	Total Affiliates	Not Affiliated	
Homicide / Manslaughter	0	0	0	0	0	0	0	0	0
Rape	0	0	0	0	0	0	0	0	0
Robbery	2	4	5	1	0	0	0	6	6
Total Assault	11	1	12	0	0	4	4	8	12
<b>Total Violent Crime Arrests</b>	<b>13</b>	<b>5</b>	<b>17</b>	<b>1</b>	<b>0</b>	<b>4</b>	<b>4</b>	<b>14</b>	<b>18</b>
<b>Property Crime</b>									
Burglary	17	6	23	0	0	5	5	18	23
Larceny	21	8	27	2	0	11	11	18	29
Motor Vehicle Theft	5	1	6	0	0	1	1	5	6
Arson	0	0	0	0	0	0	0	0	0
<b>Total Property Arrests</b>	<b>43</b>	<b>15</b>	<b>56</b>	<b>2</b>	<b>0</b>	<b>17</b>	<b>17</b>	<b>41</b>	<b>58</b>
<b>TOTAL PART I ARRESTS</b>	<b>57</b>	<b>20</b>	<b>73</b>	<b>3</b>	<b>0</b>	<b>22</b>	<b>21</b>	<b>55</b>	<b>76</b>

PART II	Sex		Age		UC Affiliation				Total Arrests
	Male	Female	Adult	Juvenile	Student	Faculty/ Staff	Total Affiliates	Not Affiliated	
Forgery & Counterfeiting	1	1	2	0	0	1	1	1	2
Fraud	1	3	4	0	0	0	0	4	4
Embezzlement	1	1	2	0	0	0	0	2	2
Stolen Property: Buy, Receive, Possess	3	0	3	0	0	0	0	3	3
Vandalism	6	0	6	0	0	2	2	4	6
Weapons Offenses - Firearms	2	0	2	0	0	0	0	2	2
Weapons Offenses - All Others	6	0	6	0	0	0	0	6	6
Sex Offenses	0	0	0	0	0	0	0	0	0
Drug Abuse Violations	86	5	85	6	13	0	13	78	91
Gambling	0	0	0	0	0	0	0	0	0
DUI (Alcohol & Drugs)	35	7	42	0	0	5	5	37	42
Liquor Laws	112	41	149	4	0	0	0	153	153
Drunkenness	5	0	5	0	0	1	1	4	5
Disorderly Conduct	19	0	19	0	0	0	0	19	19
All Other Offenses - Bomb Actual	0	0	0	0	0	0	0	0	0
All Other Offenses - Bomb Threat	0	0	0	0	0	0	0	0	0
All Other Offenses - Trespass Demo	0	0	0	0	0	0	0	0	0
All Other Offenses - Trespass Other	8	0	8	0	0	1	1	7	8
All Other UCR 26	0	0	0	0	0	0	0	0	0
<b>TOTAL PART II ARRESTS</b>	<b>285</b>	<b>58</b>	<b>333</b>	<b>10</b>	<b>13</b>	<b>10</b>	<b>23</b>	<b>320</b>	<b>343</b>

Warrants & Non-Part I / Part II Arrests

# U.C. Los Angeles Arrests 2007

## 2007 Arrests - FBI Crime Offenses

### Warrants & Non-Part I / Part II Arrests

Warrants Served Felony	2	0	2	0	0	0	0	2	2
Warrants Served Misdemeanor	13	1	14	0	0	0	0	14	14
Outside Warrants Served Felony	20	4	24	0	0	0	0	24	24
Outside Warrants Served Misdemeanor	54	2	56	0	0	0	0	56	56
All Other Non Part I/Part II Arrests	0	0	0	0	0	0	0	0	0
<b>TOTAL OTHER ARRESTS</b>	<b>89</b>	<b>7</b>	<b>96</b>	<b>0</b>	<b>0</b>	<b>0</b>	<b>0</b>	<b>96</b>	<b>96</b>

<b>TOTAL ARRESTS</b>	<b>430</b>	<b>85</b>	<b>502</b>	<b>13</b>	<b>13</b>	<b>31</b>	<b>44</b>	<b>471</b>	<b>515</b>
----------------------	------------	-----------	------------	-----------	-----------	-----------	-----------	------------	------------

[TOP](#)

# U.C. Los Angeles Miscellaneous Activity 2007

<b>Police Officers Assaulted</b>	
With Personal Injury	1
Without Personal Injury	11
<b>Total Officers Assaulted</b>	<b>12</b>
<b>Bias Motivated Cases</b>	
Race	0
Religion	0
Sexual Orientation	1
Ethnicity	2
Physical / Mental Disabled	0
<b>Total Bias Motivated Cases</b>	<b>3</b>
<b>Weapons Related Cases</b>	
Firearms	5
Knife / Blade	7
Other Dangerous Weapons	12
<b>Total Weapons Related Cases</b>	<b>24</b>
<b>Domestic Violence Cases</b>	
No Weapons Involved	10
Weapons Involved	0
<b>Total Domestic Violence Cases</b>	<b>10</b>
<b>Alcohol-Related Cases</b>	
Violent Crime	0
Property Crime	0

Other Offense	164
<b>Total Alcohol-Related Cases</b>	<b>164</b>
<b>Non-Criminal Reports</b>	
Suicide	1
Attempted Suicide	0
Mentally Disordered Persons	30
Vehicle Tows	324
Report for Outside Agency	20
All Other	534
<b>Total Non-Criminal Reports</b>	<b>909</b>
<b>Traffic Accidents</b>	
Fatal	0
Injury	22
Non-injury	146
Bicycle Involved (not included in total)	0
<b>Total Traffic Accidents</b>	<b>168</b>
<b>Alarms</b>	
Security Alarms	1141
Fire Alarms	590
<b>Total Alarms</b>	<b>1731</b>

[TOP](#)

# U.C. Los Angeles

## Value of Stolen and Recovered Property 2007

Type of Property	Stolen Property			Recovered Property			Percent Recovered
	University Property	Other Property	Total Stolen	University Property	Other Property	Total Recovered	
Currency, Notes, etc.	\$2815	\$28,930	\$31,745	\$0	\$0	\$0	0%
Jewelry & Precious Metals	\$0	\$17,729	\$17,729	\$0	\$0	\$0	0%
Clothing & Furs	\$782	\$14,223	\$15,005	\$334	\$44	\$378	3%
Locally Stolen Motor Vehicles	\$0	\$169,915	\$169,915	\$0	\$89,312	\$89,312	53%
Office Equipment - Computer	\$78,333	\$149,021	\$227,354	\$0	\$0	\$0	0%
Office Equipment - Other	\$12,321	\$2256	\$14,577	\$0	\$0	\$0	0%
TVs, Radios, Stereos, etc.	\$3355	\$43,644	\$46,999	\$0	\$0	\$0	0%
Firearms	\$0	\$0	\$0	\$0	\$0	\$0	N/A
Household Goods	\$0	\$625	\$625	\$0	\$0	\$0	0%
Consumable Goods	\$1710	\$61	\$1771	\$8	\$0	\$8	0%
Livestock	\$0	\$0	\$0	\$0	\$0	\$0	N/A
Miscellaneous - Bicycles	\$0	\$21,413	\$21,413	\$0	\$0	\$0	0%
Miscellaneous - Other	\$140,570	\$249,596	\$390,166	\$25,000	\$79	\$25,079	6%
<b>TOTAL</b>	<b>\$239,886</b>	<b>\$697,413</b>	<b>\$937,299</b>	<b>\$25,342</b>	<b>\$89,435</b>	<b>\$114,777</b>	<b>12%</b>

[TOP](#)

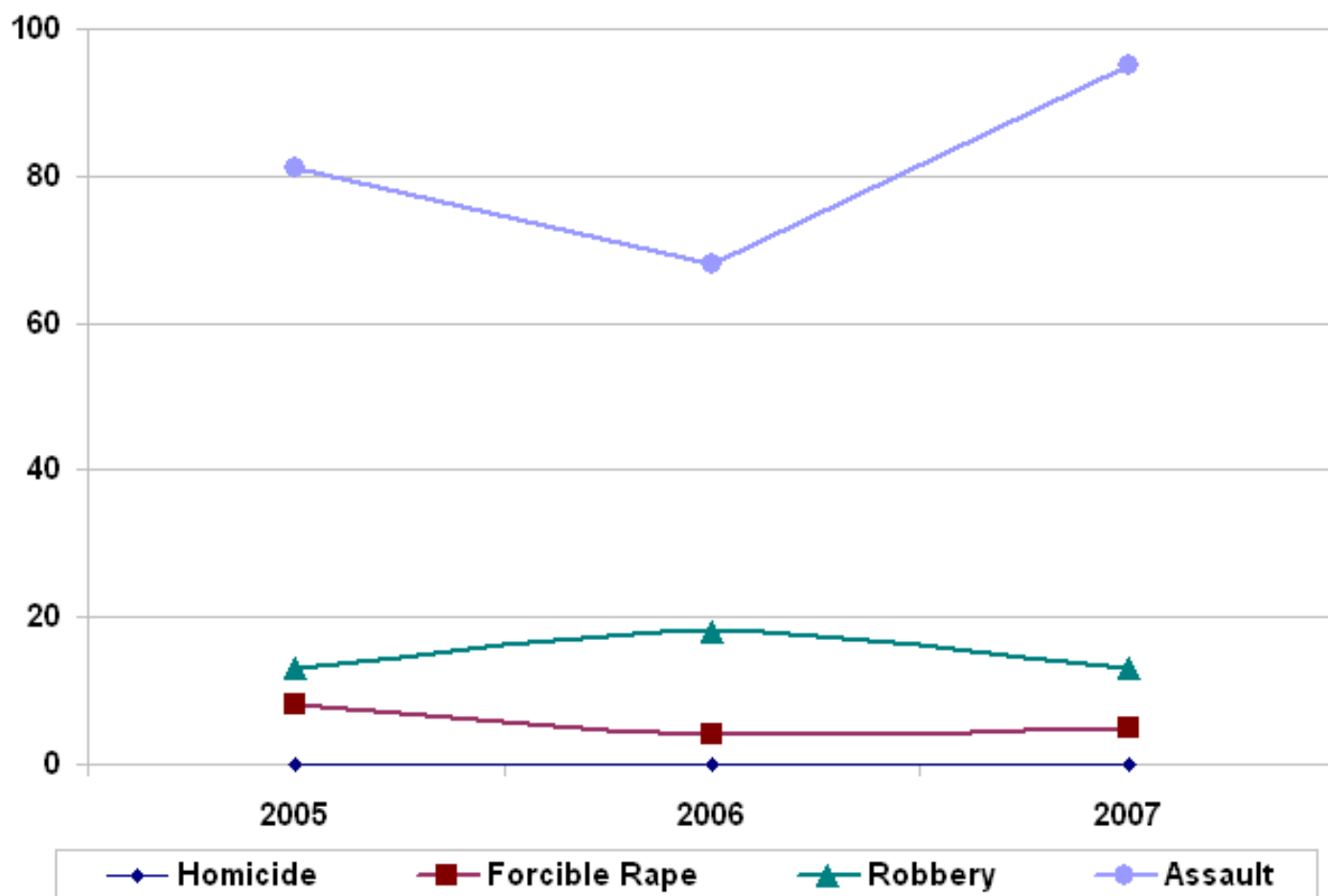
Main

2007

Page

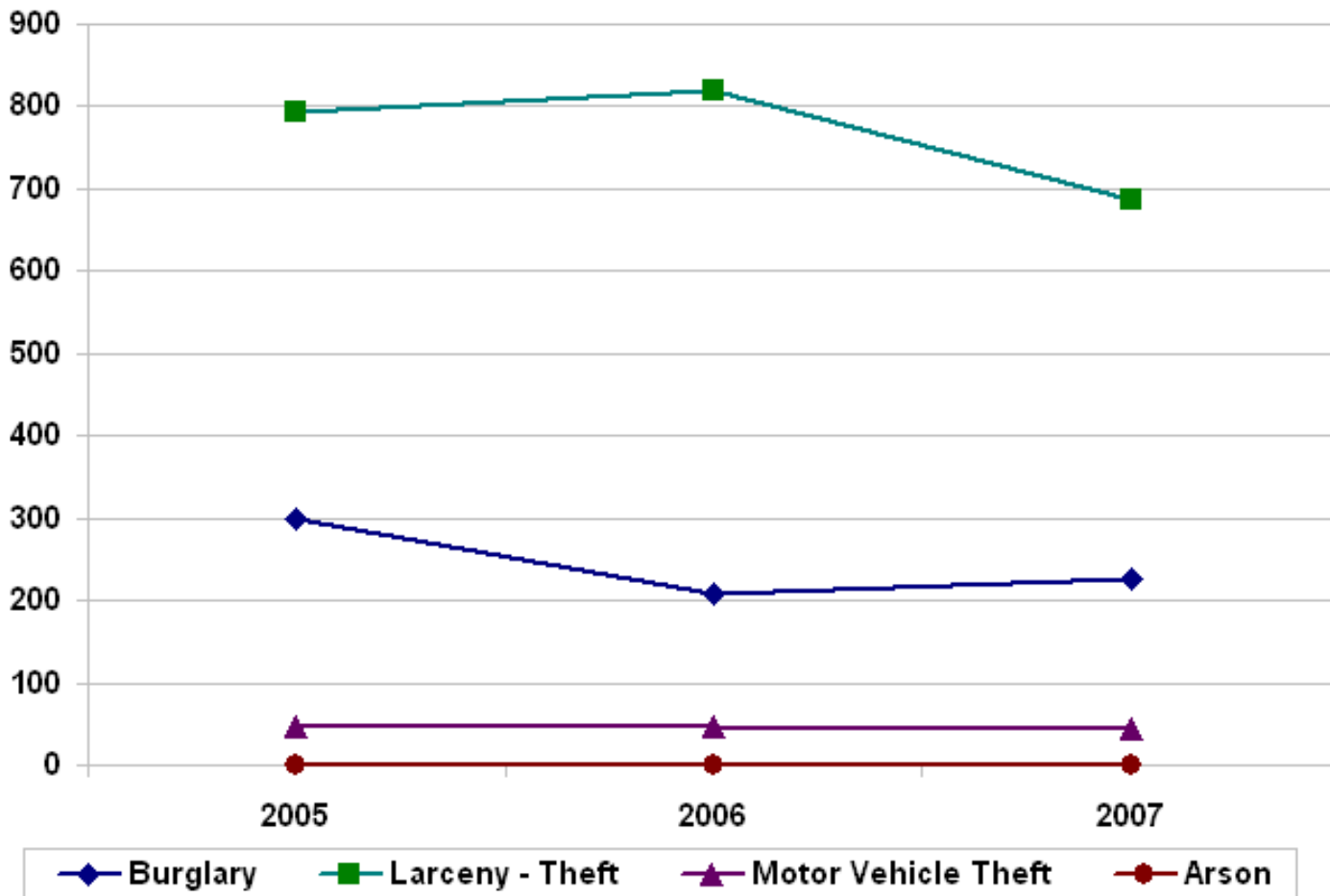
# U.C. Los Angeles Crime Line Charts

## Violent Crime - 2005 to 2007



# U.C. Los Angeles Crime Line Charts

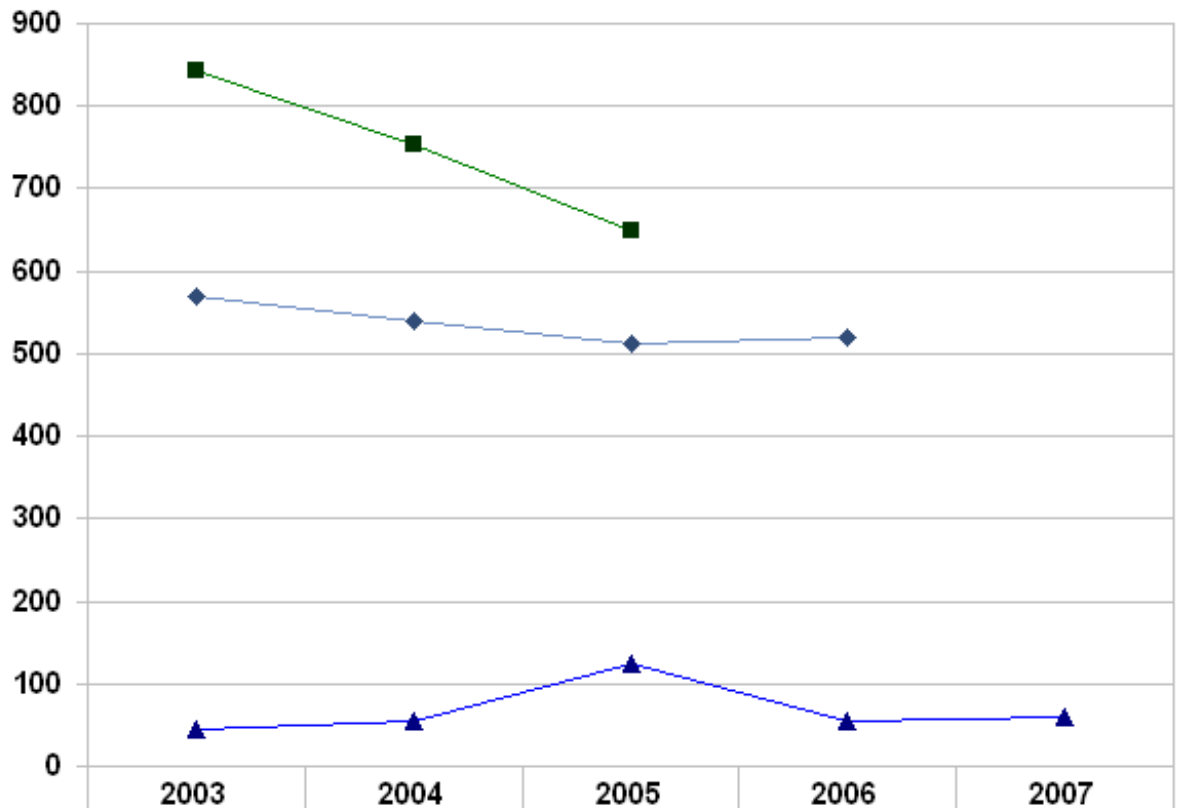
## Property Crime - 2005 to 2007



[TOP](#)

# U.C. Los Angeles Crime Rate Charts

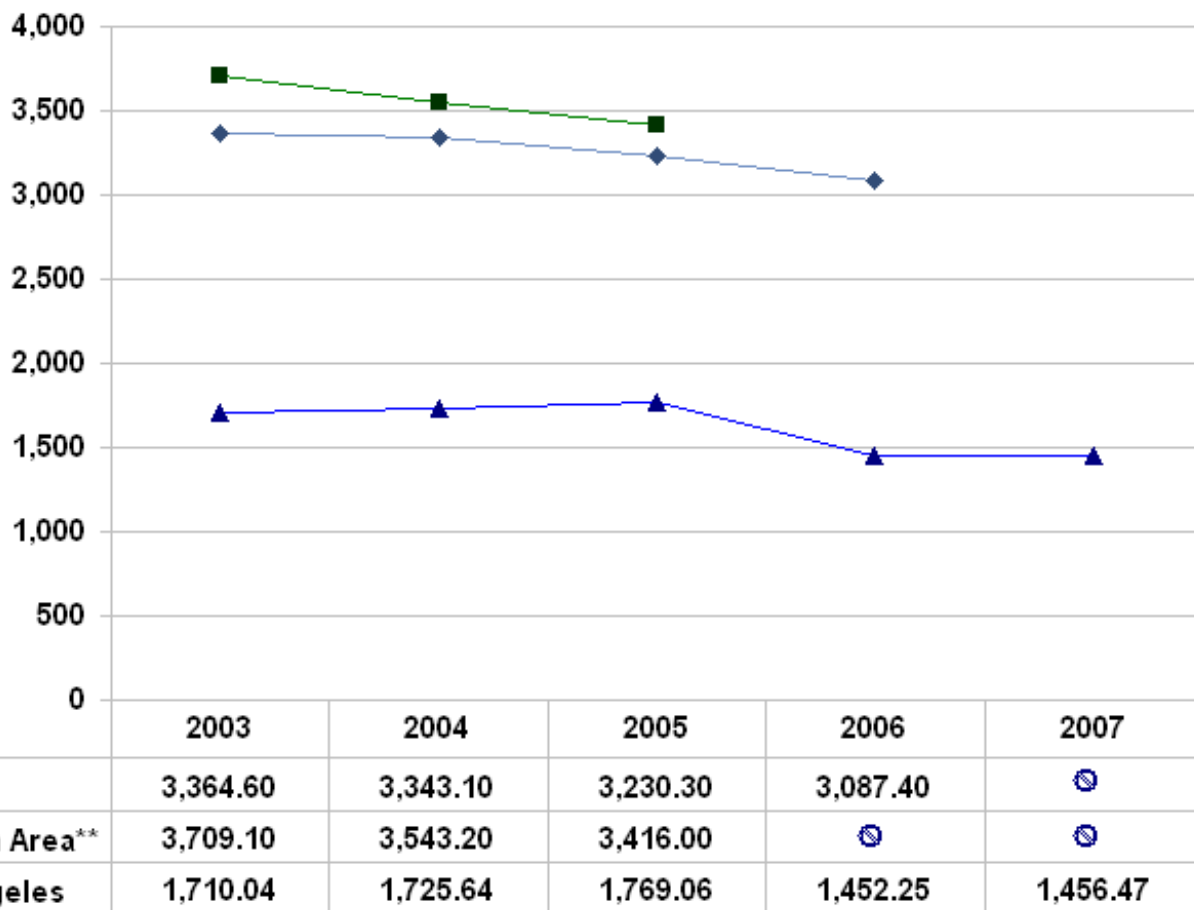
Violent Crime 2003 to 2007



◆ California	569.40	539.60	512.30	518.40	518.40
■ Metropolitan Area**	842.70	753.00	649.00	649.00	649.00
▲ U.C. Los Angeles	44.09	54.93	124.29	54.04	59.35

# U.C. Los Angeles Crime Rate Charts

Property Crime 2003 to 2007



Rate per 100,000 population - U.C. Los Angeles population 61,883

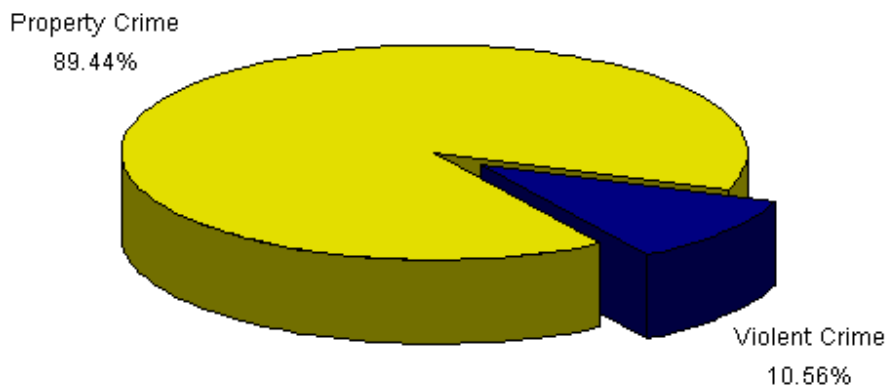
⊘ Data not available at time of publication.

\*\* U.C. Los Angeles is within the Metropolitan Area of Los Angeles County. See "[In This Report](#)" for a definition of Metropolitan Areas.

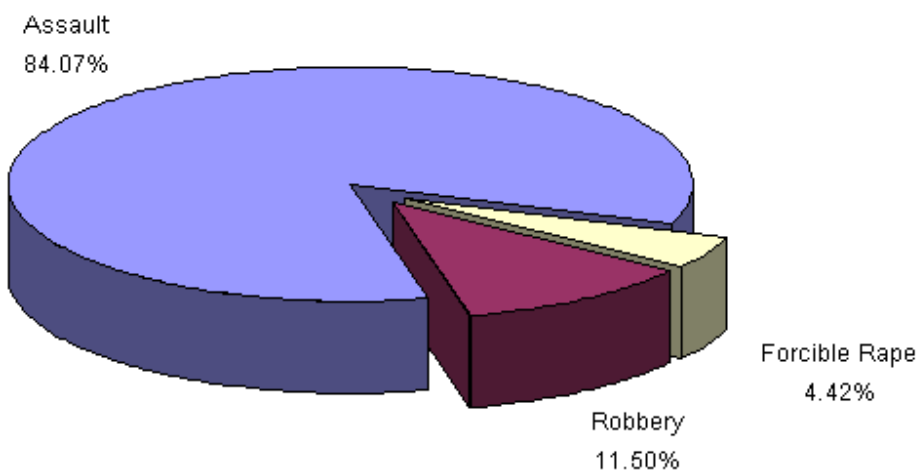
[TOP](#)

## U.C. Los Angeles Crime Charts

2007 Crime By Category

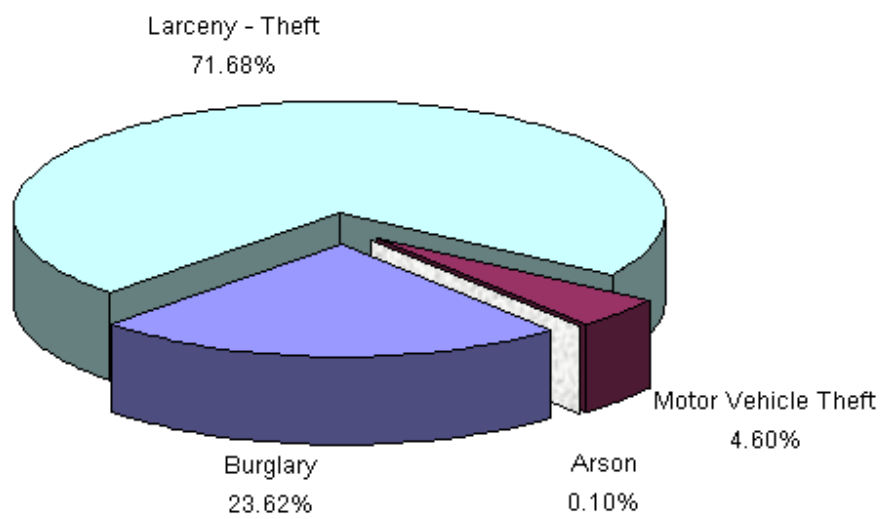


Violent Crime - 2007



## U.C. Los Angeles Crime Charts

Property Crime - 2007



[TOP](#)