



UNIVERSITY OF CALIFORNIA  
POLICE DEPARTMENT

## 2007 Annual Report & Crime Statistics

Introduction

Universitywide

Berkeley

Program Highlights

Crime Statistics

Davis

Irvine

Los Angeles

Merced

Riverside

San Diego

San Francisco

Santa Barbara

Santa Cruz

Glossary

# Berkeley

*PDF Version*

## Program Highlights

Victoria L. Harrison, Associate Vice Chancellor and Chief of Police at the University of California in Berkeley, California since 1990 and is the senior Police Chief for the Systemwide University of California Police Department. As Chief, her leadership focuses on the delivery of quality law enforcement services to the University, its members and the surrounding community.

UCPD Berkeley is composed of the Office of the Chief, the Field Operations Division and the Services Division. The Office of the Chief is overseen by the Assistant Chief. This office supports the administrative functions of the Police Department.

The Field Operations Division oversees the day-to-day operations of our patrol, investigations and events functions. The Services Division provides support services to the Department, manages the Department's Crime Prevention Programs and oversees the Security Officer Program. Field Operations and Services are managed by Captains. The Assistant Chief and the Division Captains report directly to Chief Harrison.

For detailed information about UCPD and programs offered by our Department, please go to <http://police.berkeley.edu/index.html>.

Office of the Chief

The Office of the Chief consists of the Budget Manager, the Business Services Manager, the Executive Assistant to the Chief of Police and the Administrative Lieutenant, all who report directly to Assistant Chief Celaya. The Administrative Lieutenant Adan Tejada, is primarily responsible for personnel actions; information systems; marketing and publications; ongoing recruiting, hiring, training and employee development, response to public concerns and oversight of internal investigations. Manager Greg Watty, is responsible for the department's budget, human resources and payroll. Manager Watty also provided oversight to the Business Services Unit while the department recruited a Business Services Manager.

In 2007, the Office of the Chief experienced a successful year of staffing for sworn personnel with an annual turnover rate of 4.9%. The department continued ongoing efforts to identify, recruit and hire excellent new employees, both sworn and non-sworn.

## Field Operations Division

The Field Operations Division, led by Captain Guillermo A. Beckford, consists of the Patrol Bureau, Investigations Bureau and the Events Bureau. The Field Operations Division primarily represents the uniform and investigative personnel of the Police Department. Captain Beckford provides command oversight for the UCPD Bomb Team, the Special Response Unit and our Negotiations and Entry Team.

### Patrol Bureau

The Patrol Bureau, managed by Lieutenant Rick Dillard, provides primary and traditional law enforcement services to the Berkeley campus and nearby community. Using a combination of mobile patrols (car, motorcycle and specialized vehicles), bicycles, foot patrol and directed patrol activities, the Bureau serves an estimated population of 50,000 people, including over 9,000 residents of campus residential facilities. In 2007, the Patrol Officers made over 1,000 arrests and issued 1,667 citations for vehicle code violations.

In addition, officers documented 301 assists to other law enforcement agencies.

The Patrol Bureau participates in the jointly staffed Berkeley Telegraph Avenue Program and oversees the Campus Building Watch Program. Patrol personnel actively serve the Department in other areas such as our Negotiations and Entry Team (NET), Bomb Squad and the Special Response Unit, which includes Dignitary Protection and a specialized Arrest Team.

### **Criminal Investigations Bureau**

A Sergeant and 5 Detectives staff the Criminal Investigations Bureau, which reports to the Events Lieutenant. The Bureau conducts initial investigations as well as follow-up investigations from cases generated by the Patrol Bureau for crimes on University properties and the Office of the President facilities. The Bureau also works closely with other University departments that have uncovered criminal activity during the course of routine audits and inspections.

Our Threat Management Unit reviews all cases involving threatening behavior, including stalking, intimidation and harassing telephone calls, e-mails or letters, as well as cases of domestic violence. The Unit also provides training both to the Department and to the campus community on these topics.

### **Events Bureau**

The Events Bureau is managed by Lieutenant Doug Wing who oversees our Homeland Security activities, Special Events Management and the Residential Student Program (RSP). UCPD continues to be the lead in coordinating and strategizing the campus response to homeland security and the ongoing concerns of a possible terrorist threat. In addition to drafting, submitting and managing OHS grants, the Events Bureau Lieutenant represents the University at the Bay Area Threat Working Group (BATWG), the California Anti-Terrorism Information Center (CATIC) and other Anti-Terrorism meetings.

Lieutenant Wing coordinates all Campus Special Events and works closely with other campus departments and student groups to plan, advise and staff special events. This year the Special Events Unit staffed and processed 205 events on campus. These events consisted of dignitary visits, controversial speakers, dances, concerts, conferences, mutual aid requests and athletic events. The Residential Student Program (RSP) provides coordination, liaison and support for the University's Residential Student Services Programs (RSSP) in reducing crime in University residence halls and family housing units. A police Sergeant is assigned to work closely with RSSP and manages the Residential Security Patrol Program, Security Monitor Program and Residential Student Liaison Officer Program.

### **Bomb Team**

The University of California Berkeley's nationally accredited Bomb Team, staffed with a commander and certified bomb technicians, has been in existence for 36 years and provides service to the campus and 29 agencies with which UCPD has a Memorandum of Understanding. In 2007, the Team responded to 17 calls for service 6 of which were on campus. In 2007, we trained on specific device analysis and render-safe procedures, both hands-on and with the Andros robot and, as in the past, we continued to provide explosive awareness training to outside organizations.

### **Services Division**

The Services Division is managed by Captain Margo Bennett and consists of UCPD's Crime Prevention Unit, Night Safety Programs Unit, Communications Center, Records Management System and the Security Patrol Officer Unit. The Facility/Property Management Unit, which oversees property, evidence and facility management, reports directly to Captain Bennett as does the Office of Emergency Preparedness. This Division is also responsible for compiling and submitting the data for our annual "Jeanne Clery Act" Report and disseminating the crime alerts which are a Clery

Act requirement.

### Crime Prevention Program

The Crime Prevention Unit (CPU) provides day-to-day coordination for UCPD safety and security programs. CPU is staffed with one Sergeant, one Officer and four civilians. CPU is responsible for providing continuing education to our constantly changing campus community and offers programs at all new student orientation sessions as well as ongoing outreach to all members of our community. With special training in the prevention of crime through environmental design, members of CPU are responsible for the ongoing security of campus facilities through initial survey, plan review and management of installation of equipment in new and renovated structures. CPU strives to ensure that state-of-the-art technologies, including modern video, alarm and access systems are employed in protecting University facilities.

### Night Safety Programs Unit

The Night Safety Programs Unit is led by the Night Safety Program Administrator. Her primary responsibility is to manage programs critical to the safety of our campus population while they move about our campus and the surrounding area. Our Community Service Officer (CSO) Program is staffed by a cadre of up to 70 part-time student employees. The CSOs provide the BearWALK escort service, and run the door-to-door service known as the Owl Line. In 2007, the CSOs performed 6,503 BearWALK escorts and 4,544 late night Owl line rides. The CSOs are also responsible for providing day and evening foot and bicycle patrols on campus and in the wooded, mountainous area on the east end of campus, assisting various units within the department and providing security for special events on the campus. CSO activities provide a high-profile uniformed presence during the hours of darkness, and positively impacted the coordinated safety efforts for the entire campus.

## Communications Center and Records Unit

The Communications Unit receives and dispatches all calls through our Computer Aided Dispatch system. This year, Communications enjoyed the stability of a fully staffed unit. Communications handled 12,300 emergency calls and dispatched 99.5% of these calls within our benchmark of 90 seconds. Our Records Unit manages the Department's police records and the campus fingerprinting process. Their workload consists of processing 5,757 case reports, over 1,800 moving and bike citations and provided fingerprint services for UC applicants, identified personnel and the general public. For a look at the Departments Daily Activity Bulletin please go to <http://police.berkeley.edu/>.

## Office of Emergency Preparedness

In 2007, the Office of Emergency Preparedness (OEP) participated in a Pandemic Planning table top exercise that identified and explored issues impacting the Campus should a pandemic situation evolve. Over 200 individuals, including members of local and state governments, participated in this exercise resulting in the finalized Campus Pandemic Plan.

OEP also manages the campus's 1,000 acre natural preserve in the Berkeley hills for fire safety. In 2007, three heavy fuels projects were accomplished, resulting in the removal of 2,750 eucalyptus trees on 16 acres of campus wildlands.

## Security Patrol Officer Unit

Our SPO Program, overseen by Lieutenant Doug Wing, provides non-sworn, uniformed officers at University facilities both on and off of the central campus. Their primary responsibility is to provide security, protect University employees and safeguard University property. They also provide other roles that include crime scene video technicians, field evidence collection and special event staffing. In 2007, the SPO program provided security coverage at eight (8) sites.

[TOP](#)

[Main](#)



[Page](#)



UNIVERSITY OF CALIFORNIA  
POLICE DEPARTMENT

2007

## Annual Report & Crime Statistics

[Introduction](#)

[Universitywide](#)

[Berkeley](#)

[Program Highlights](#)

[Crime Statistics](#)

[Davis](#)

[Irvine](#)

[Los Angeles](#)

[Merced](#)

[Riverside](#)

[San Diego](#)

[San Francisco](#)

[Santa Barbara](#)

[Santa Cruz](#)

[Glossary](#)

# Berkeley

[PDF Version](#)

## Crime Statistics

- ***FBI Part I & Part II Crime Offenses***
- ***Arrests***
- ***Miscellaneous Activity***
- ***Value of Stolen Property***
- ***Crime Pie Charts***
- ***Crime Line Charts***
- ***Crime Rate Charts***

[Main](#)



[Page](#)

# U.C. Berkeley

## FBI Part I & Part II Crime Offenses

### 2005 to 2007

2007 PART I OFFENSES	2005 NUMBER OF ACTUAL OFFENSES	2006 NUMBER OF ACTUAL OFFENSES	2007 NUMBER OF ACTUAL OFFENSES	2006 to 2007 Percent Change	2007 Offenses Cleared by Arrest or Exceptional Means	2007 Percent Cleared
<b>Criminal Homicide</b>						
Murder & Non Negligent	0	0	0	**	0	N/A
Manslaughter by Negligence	0	0	0	**	0	N/A
<b>TOTAL CRIMINAL HOMICIDE</b>	<b>0</b>	<b>0</b>	<b>0</b>	<b>0%</b>	<b>0</b>	<b>N/A</b>
<b>Forcible Rape</b>						
Rape by Force	2	5	6	**	7	117%
Attempts to Commit Forcible Rape	1	1	1	**	1	100%
<b>TOTAL FORCIBLE RAPE</b>	<b>3</b>	<b>6</b>	<b>7</b>	<b>**</b>	<b>8</b>	<b>114%</b>
<b>Robbery</b>						
Firearm	5	5	7	**	1	14%
Knife or Cutting Instrument	1	1	3	**	2	67%
Other Dangerous Weapon	0	1	4	**	2	50%
Strong - Arm	9	17	13	-24%	7	54%
<b>TOTAL ROBBERY</b>	<b>15</b>	<b>24</b>	<b>27</b>	<b>13%</b>	<b>12</b>	<b>44%</b>
<b>Assault</b>						
Firearm	0	1	0	**	0	N/A
Knife or Cutting Instrument	2	2	2	**	0	0%
Other Dangerous Weapon	2	3	6	**	4	67%
Hands, Fists, Feet, etc.	3	8	7	**	9	129%
Other Assault - Simple	73	95	170	79%	128	75%
<b>TOTAL ASSAULT</b>	<b>80</b>	<b>109</b>	<b>185</b>	<b>70%</b>	<b>141</b>	<b>76%</b>
<b>Part I Violent Crime Total</b>	<b>98</b>	<b>139</b>	<b>219</b>	<b>58%</b>	<b>161</b>	<b>74%</b>
<b>Burglary</b>						
Forcible Entry	28	29	35	21%	3	9%
Unlawful Entry - No Force	38	54	42	-22%	8	19%
Attempted Forcible Entry	8	6	12	100%	0	0%

<b>TOTAL BURGLARY</b>	<b>74</b>	<b>89</b>	<b>89</b>	<b>0%</b>	<b>11</b>	<b>12%</b>
<b>Larceny - Theft</b>						
<b>TOTAL LARCENY - THEFT</b>	<b>771</b>	<b>814</b>	<b>737</b>	<b>-9%</b>	<b>68</b>	<b>9%</b>
<b>Motor Vehicle Theft</b>						
Autos	5	17	6	-65%	0	0%
Trucks and Buses	8	0	4	**	0	0%
Other Vehicles	11	5	6	**	0	0%
<b>TOTAL MOTOR VEHICLE THEFT</b>	<b>24</b>	<b>22</b>	<b>16</b>	<b>-27%</b>	<b>0</b>	<b>0%</b>
<b>Arson</b>						
<b>TOTAL ARSON</b>	<b>4</b>	<b>1</b>	<b>11</b>	<b>1000%</b>	<b>1</b>	<b>9%</b>
<b>Part I Property Crime Total</b>	<b>873</b>	<b>926</b>	<b>853</b>	<b>-8%</b>	<b>80</b>	<b>9%</b>
<b>PART I OFFENSES TOTAL</b>	<b>971</b>	<b>1065</b>	<b>1072</b>	<b>1%</b>	<b>241</b>	<b>22%</b>

<b>2007 PART II OFFENSES</b>	<b>2005 NUMBER OF ACTUAL OFFENSES</b>	<b>2006 NUMBER OF ACTUAL OFFENSES</b>	<b>2007 NUMBER OF ACTUAL OFFENSES</b>	<b>2006 to 2007 Percent Change</b>	<b>2007 Offenses Cleared by Arrest or Exceptional Means</b>	<b>2007 Percent Cleared</b>
Forgery & Counterfeiting	17	13	12	-8%	7	58%
Fraud	8	8	5	**	0	0%
Embezzlement	0	1	2	**	1	50%
Stolen Property: Buy, Receive, Possess	9	14	14	0%	9	64%
Vandalism	179	181	203	12%	13	6%
Weapons Offenses - Firearms	0	1	1	**	1	100%
Weapons Offenses - All Others	13	18	22	22%	13	59%
<b>WEAPONS OFFENSES TOTAL</b>	<b>13</b>	<b>19</b>	<b>23</b>	<b>21%</b>	<b>14</b>	<b>61%</b>
Sex Offenses	8	8	4	**	2	50%
Drug Abuse Violations	108	157	136	-13%	126	93%
Gambling	0	0	0	**	0	N/A
DUI (Alcohol & Drugs)	22	29	35	21%	33	94%
Liquor Laws	4	9	17	89%	16	94%
Drunkenness	88	89	86	-3%	83	97%
Disorderly Conduct	21	28	24	-14%	9	38%
All Other Offenses - Bomb Actual	0	0	0	**	0	N/A
All Other Offenses - Bomb Threat	3	1	0	**	0	N/A

All Other Offenses - Trespass Demo	0	2	1	**	1	100%
All Other Offenses - Trespass Other	108	44	30	-32%	22	73%
All Other Offenses - All Other UCR 26	84	155	353	128%	266	75%
<b>ALL OTHER OFFENSES TOTAL</b>	<b>195</b>	<b>202</b>	<b>384</b>	<b>90%</b>	<b>289</b>	<b>75%</b>
<b>PART II OFFENSES TOTAL</b>	<b>672</b>	<b>758</b>	<b>945</b>	<b>25%</b>	<b>602</b>	<b>64%</b>

\*\* Base numbers less than 10.

[TOP](#)

# U.C. Berkeley Arrests 2007

## 2007 Arrests - FBI Crime Offenses

PART I	Sex		Age		UC Affiliation				Total Arrests
	Male	Female	Adult	Juvenile	Student	Faculty/ Staff	Total Affiliates	Not Affiliated	
Homicide / Manslaughter	0	0	0	0	0	0	0	0	0
Rape	2	0	2	0	1	0	1	1	2
Robbery	17	0	4	13	2	0	2	15	17
Total Assault	72	6	78	0	25	1	26	52	78
<b>Total Violent Crime Arrests</b>	<b>91</b>	<b>6</b>	<b>84</b>	<b>13</b>	<b>28</b>	<b>1</b>	<b>29</b>	<b>68</b>	<b>97</b>
<b>Property Crime</b>									
Burglary	15	5	15	5	2	0	2	18	20
Larceny	27	8	32	3	19	1	20	15	35
Motor Vehicle Theft	3	1	4	0	0	0	0	4	4
Arson	1	0	1	0	0	0	0	1	1
<b>Total Property Arrests</b>	<b>46</b>	<b>14</b>	<b>52</b>	<b>8</b>	<b>21</b>	<b>1</b>	<b>22</b>	<b>38</b>	<b>60</b>
<b>TOTAL PART I ARRESTS</b>	<b>137</b>	<b>20</b>	<b>136</b>	<b>21</b>	<b>49</b>	<b>2</b>	<b>51</b>	<b>106</b>	<b>157</b>

PART II	Sex		Age		UC Affiliation				Total Arrests
	Male	Female	Adult	Juvenile	Student	Faculty/ Staff	Total Affiliates	Not Affiliated	
Forgery & Counterfeiting	4	2	6	0	3	0	3	3	6
Fraud	1	0	1	0	0	1	1	0	1
Embezzlement	0	1	1	0	1	0	1	0	1
Stolen Property: Buy, Receive, Possess	9	1	9	1	2	0	2	8	10
Vandalism	11	1	7	5	0	0	0	12	12
Weapons Offenses - Firearms	2	1	3	0	0	0	0	3	3
Weapons Offenses - All Others	6	1	6	1	0	0	0	7	7
Sex Offenses	2	0	2	0	0	0	0	2	2
Drug Abuse Violations	129	17	129	17	16	0	16	130	146
Gambling	0	0	0	0	0	0	0	0	0
DUI (Alcohol & Drugs)	28	10	37	1	6	0	6	32	38
Liquor Laws	13	1	13	1	1	0	1	13	14
Drunkenness	80	13	93	0	15	2	17	76	93
Disorderly Conduct	21	1	20	2	0	0	0	22	22
All Other Offenses - Bomb Actual	0	0	0	0	0	0	0	0	0
All Other Offenses - Bomb Threat	0	0	0	0	0	0	0	0	0
All Other Offenses - Trespass Demo	21	25	46	0	42	0	42	4	46
All Other Offenses - Trespass Other	25	6	30	1	8	0	8	23	31
All Other UCR 26	120	27	143	4	10	0	10	137	147
<b>TOTAL PART II ARRESTS</b>	<b>472</b>	<b>107</b>	<b>546</b>	<b>33</b>	<b>104</b>	<b>3</b>	<b>107</b>	<b>472</b>	<b>579</b>

# U.C. Berkeley Arrests 2007

## 2007 Arrests - FBI Crime Offenses

### Warrants & Non-Part I / Part II Arrests

Warrants Served Felony	1	0	1	0	0	0	0	1	1
Warrants Served Misdemeanor	65	16	81	0	4	2	6	75	81
Outside Warrants Served Felony	17	2	19	0	0	0	0	19	19
Outside Warrants Served Misdemeanor	135	22	155	2	2	0	2	155	157
All Other Non Part I/Part II Arrests	28	27	55	0	9	20	29	26	55
<b>TOTAL OTHER ARRESTS</b>	<b>246</b>	<b>67</b>	<b>311</b>	<b>2</b>	<b>15</b>	<b>22</b>	<b>37</b>	<b>276</b>	<b>313</b>

<b>TOTAL ARRESTS</b>	<b>855</b>	<b>194</b>	<b>993</b>	<b>56</b>	<b>168</b>	<b>27</b>	<b>195</b>	<b>854</b>	<b>1049</b>
----------------------	------------	------------	------------	-----------	------------	-----------	------------	------------	-------------

[TOP](#)

# U.C. Berkeley

## Miscellaneous Activity 2007

Police Officers Assaulted	
With Personal Injury	19
Without Personal Injury	6
<b>Total Officers Assaulted</b>	<b>25</b>
Bias Motivated Cases	
Race	2
Religion	1
Sexual Orientation	2
Ethnicity	0
Physical / Mental Disabled	0
<b>Total Bias Motivated Cases</b>	<b>5</b>
Weapons Related Cases	
Firearms	8
Knife / Blade	30
Other Dangerous Weapons	92
<b>Total Weapons Related Cases</b>	<b>130</b>
Domestic Violence Cases	
No Weapons Involved	5
Weapons Involved	5
<b>Total Domestic Violence Cases</b>	<b>10</b>
Alcohol-Related Cases	
Violent Crime	21
Property Crime	1

Other Offense	243
<b>Total Alcohol-Related Cases</b>	<b>265</b>
*This number reflects the arrest or citation of 668 persons.	
<b>Non-Criminal Reports</b>	
Suicide	1
Attempted Suicide	2
Mentally Disordered Persons	67
Vehicle Tows	174
Report for Outside Agency	301
All Other	1543
<b>Total Non-Criminal Reports</b>	<b>2088</b>
<b>Traffic Accidents</b>	
Fatal	0
Injury	8
Non-injury	14
Bicycle Involved (not included in total)	3
<b>Total Traffic Accidents</b>	<b>22</b>
<b>Alarms</b>	
Security Alarms	1372
Fire Alarms	259
<b>Total Alarms</b>	<b>1631</b>

[TOP](#)

# U.C. Berkeley

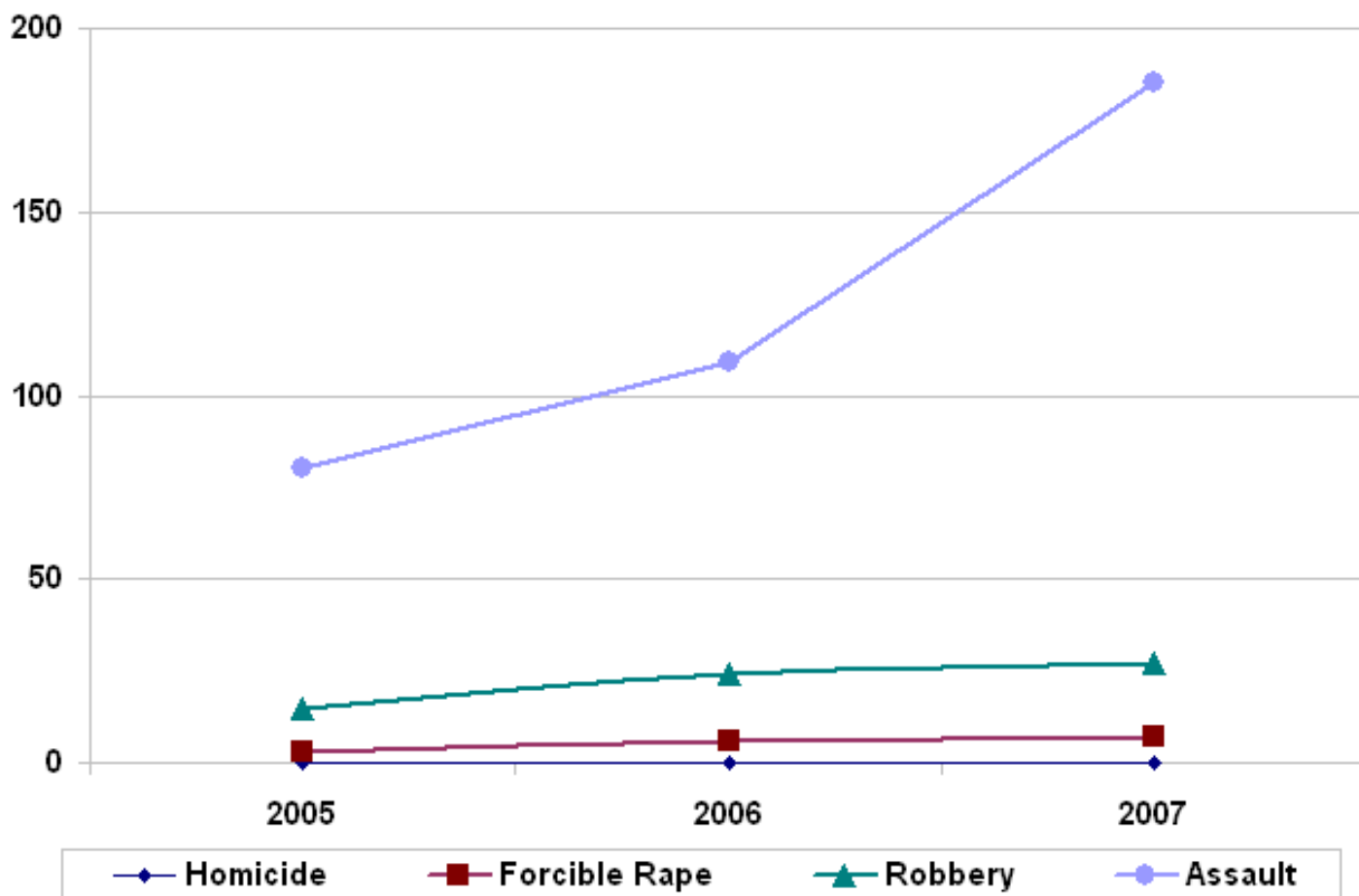
## Value of Stolen and Recovered Property 2007

Type of Property	Stolen Property			Recovered Property			Percent Recovered
	University Property	Other Property	Total Stolen	University Property	Other Property	Total Recovered	
Currency, Notes, etc.	\$8936	\$16,982	\$25,918	\$20	\$90	\$110	0%
Jewelry & Precious Metals	\$76,698	\$10,840	\$87,538	\$75,100	\$40	\$75,140	86%
Clothing & Furs	\$2145	\$26,154	\$28,299	\$0	\$2313	\$2313	8%
Locally Stolen Motor Vehicles	\$9603	\$72,597	\$82,200	\$5601	\$602	\$6203	8%
Office Equipment - Computer	\$107,143	\$77,322	\$184,465	\$3000	\$5529	\$8529	5%
Office Equipment - Other	\$2098	\$9580	\$11,678	\$50	\$2098	\$2148	18%
TVs, Radios, Stereos, etc.	\$13,308	\$25,139	\$38,447	\$0	\$280	\$280	1%
Firearms	\$0	\$0	\$0	\$0	\$0	\$0	N/A
Household Goods	\$1646	\$669	\$2315	\$481	\$39	\$520	22%
Consumable Goods	\$392	\$2336	\$2728	\$39	\$63	\$102	4%
Livestock	\$0	\$0	\$0	\$0	\$0	\$0	N/A
Miscellaneous - Bicycles	\$770	\$83,185	\$83,955	\$0	\$0	\$0	0%
Miscellaneous - Other	\$20,552	\$67,911	\$88,463	\$2690	\$11,515	\$14,205	16%
<b>TOTAL</b>	<b>\$243,291</b>	<b>\$392,715</b>	<b>\$636,006</b>	<b>\$86,981</b>	<b>\$22,569</b>	<b>\$109,550</b>	<b>17%</b>

[TOP](#)

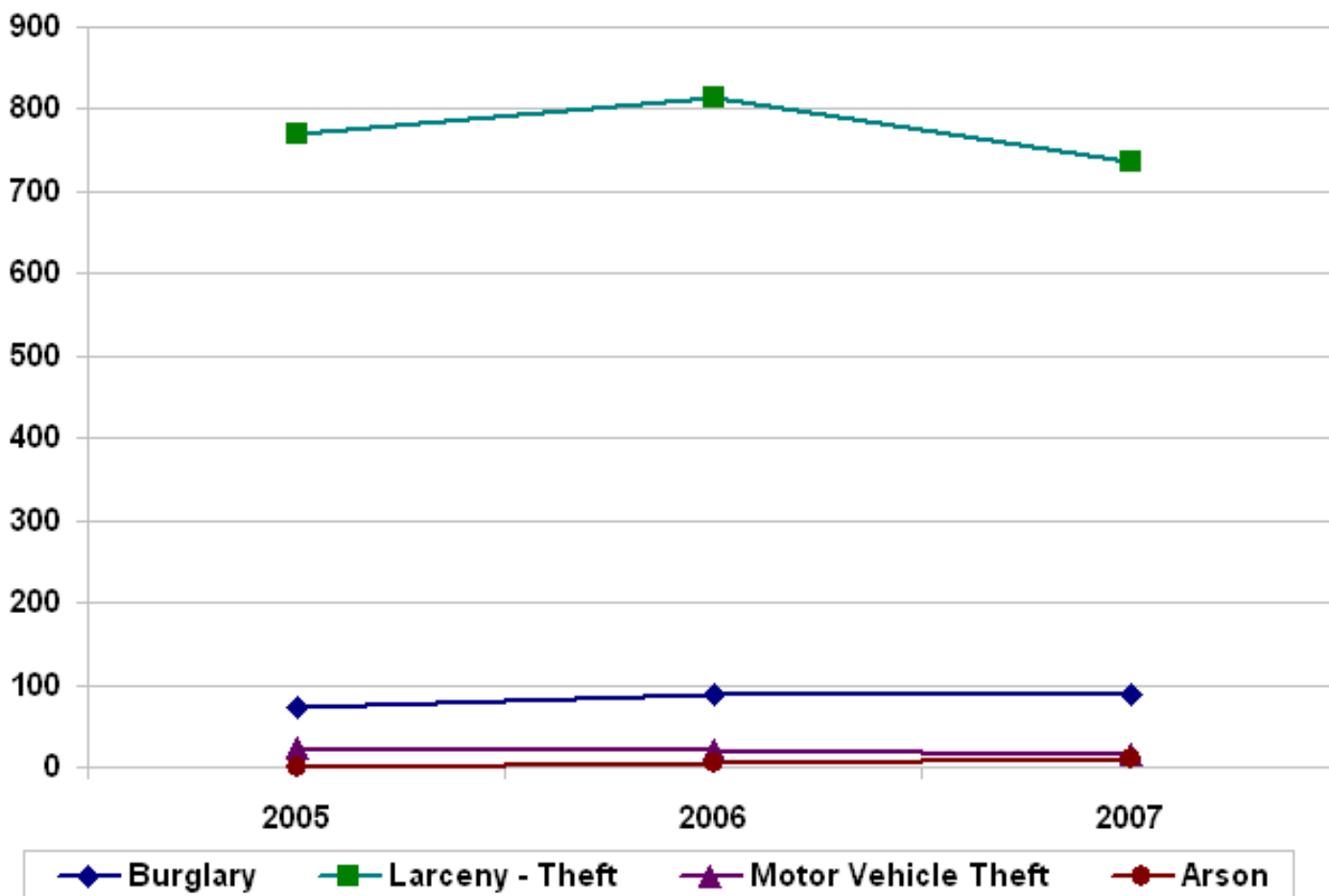
# U.C. Berkeley Crime Line Charts

## Violent Crime - 2005 to 2007



# U.C. Berkeley Crime Line Charts

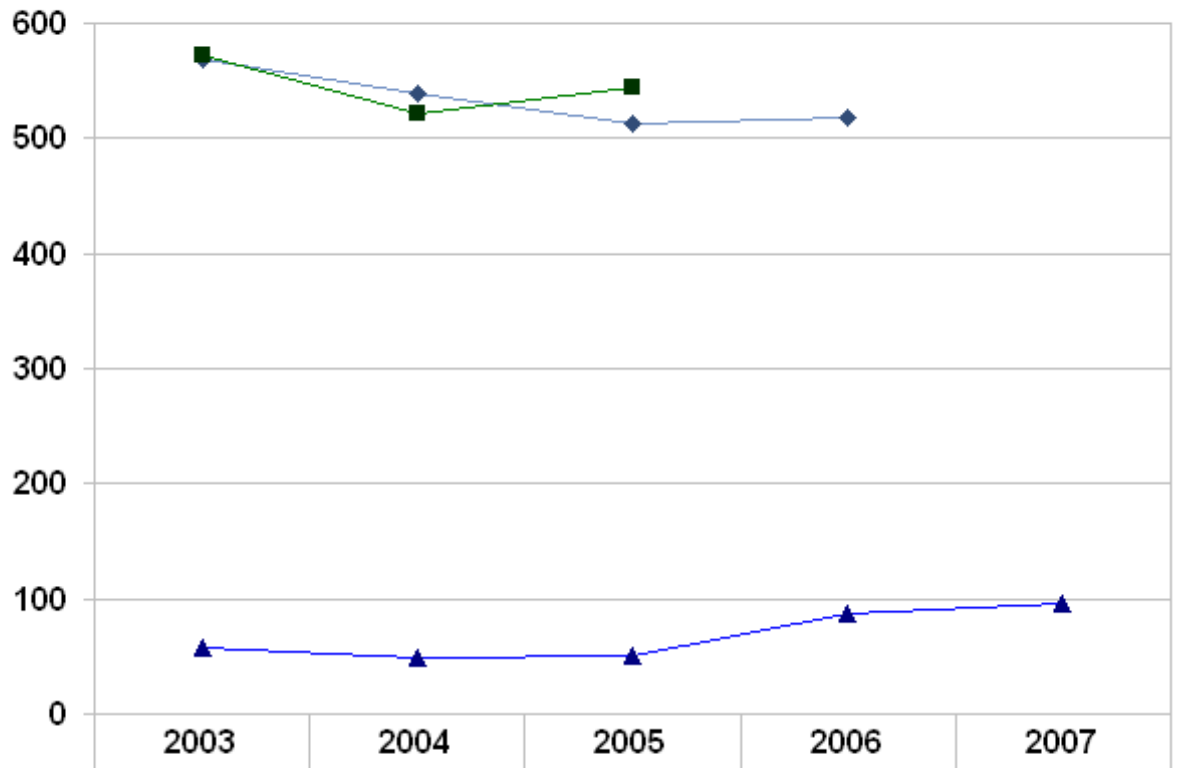
## Property Crime - 2005 to 2007



[TOP](#)

# U.C. Berkeley Crime Rate Charts

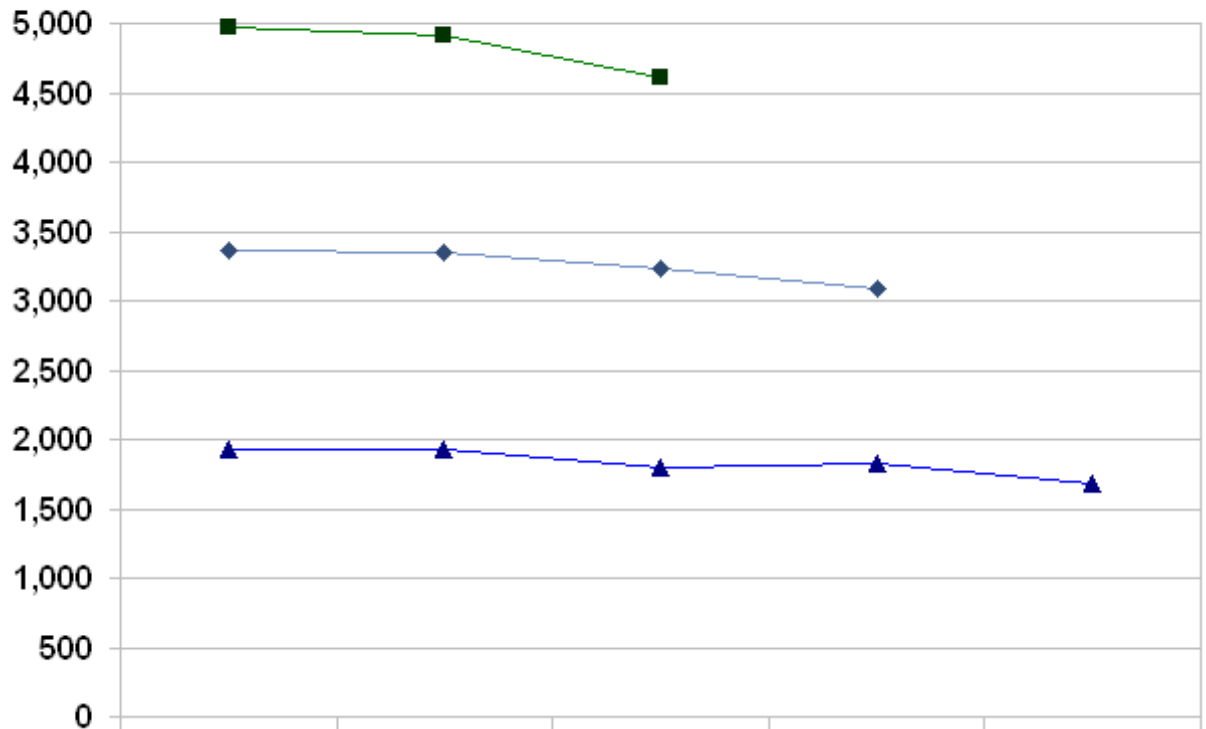
Violent Crime 2003 to 2007



	2003	2004	2005	2006	2007
California	569.40	539.60	512.30	518.40	⊗
Metropolitan Area**	571.80	521.60	544.10	⊗	⊗
U.C. Berkeley	56.95	49.30	50.67	86.94	96.17

# U.C. Berkeley Crime Rate Charts

Property Crime 2003 to 2007



	2003	2004	2005	2006	2007
—◆— California	3,364.60	3,343.10	3,230.30	3,087.40	⊗
—■— Metropolitan Area**	4,966.50	4,913.90	4,601.90	⊗	⊗
—▲— U.C. Berkeley	1,920.89	1,932.63	1,796.36	1,829.71	1,674.06

Rate per 100,000 population - U.C. Berkeley population 50,954

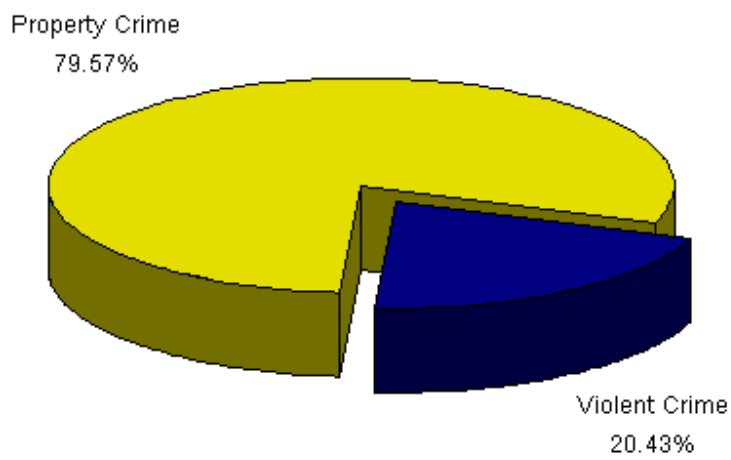
⊗ Data not available at time of publication.

\*\* U.C. Berkeley is within the Metropolitan Area of Alameda County and Contra Costa County. See "[In This Report](#)" for a definition of Metropolitan Areas.

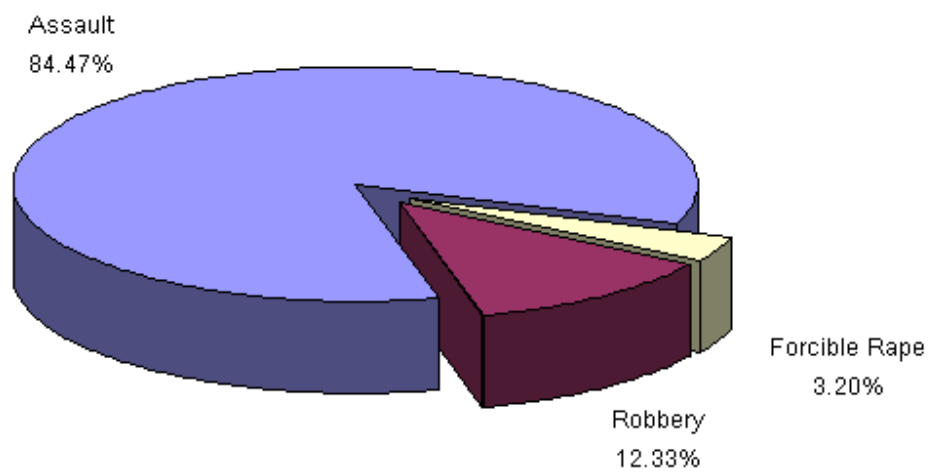
[TOP](#)

## U.C. Berkeley Crime Charts

### 2007 Crime By Category

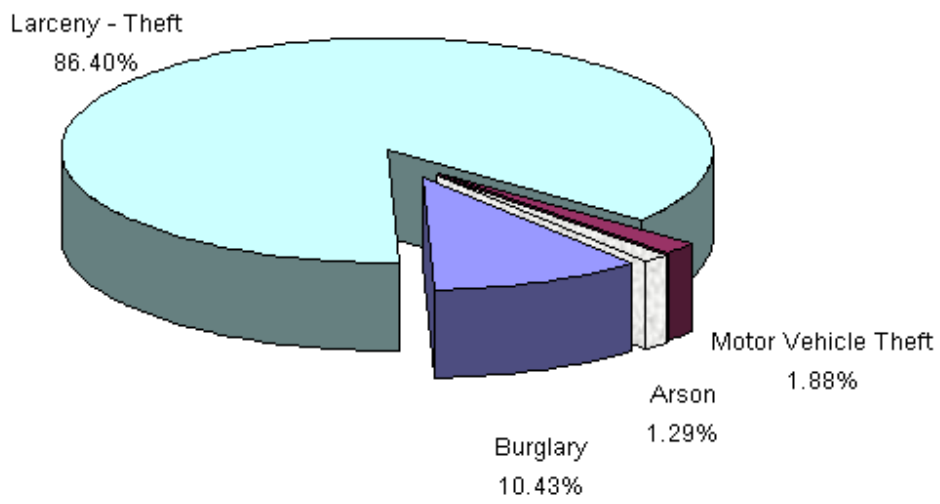


### Violent Crime - 2007



# U.C. Berkeley Crime Charts

2007 Crime By Category



[TOP](#)